



OFFICIAL CATALOGUE  
**World's Premier Dental Imaging Company**

# **PREMIUM DENTAL SOLUTIONS**

**vatech**

# About Vatech

## We are Vatech global X-ray imaging company

As the European subsidiary of Vatech, Vatech Europe is committed to providing the industry with innovative dental X-ray imaging solutions while maintaining a primary focus on ultimately enhancing the quality of patient care.

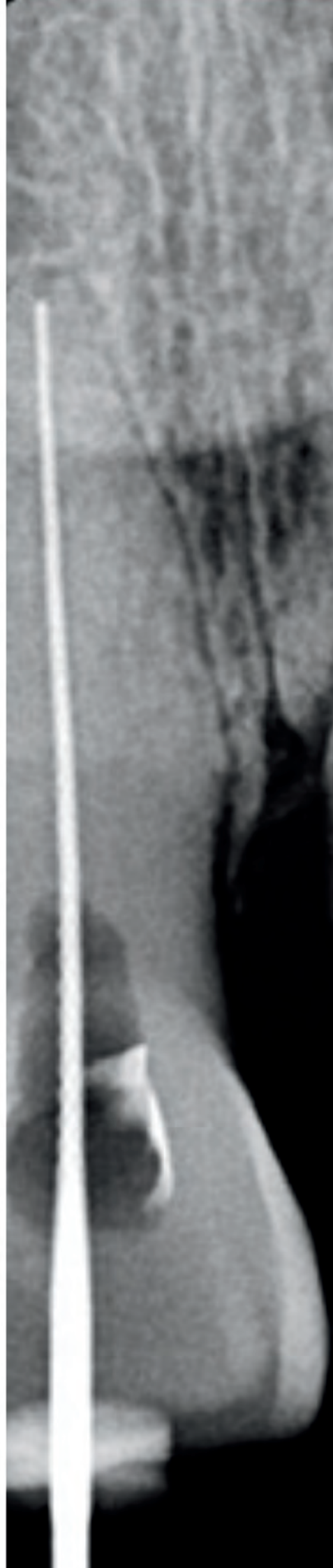




# Content

|                       |    |
|-----------------------|----|
| Intraoral Imaging     | 6  |
| EzRay Air Wall 2      | 8  |
| EzRay Air Wall        | 10 |
| EzRay Air Portable    | 12 |
| EzSensor HD           | 14 |
| Vatech VSP            | 16 |
| EzScan                | 18 |
| EzCam                 | 20 |
| 2D Imaging            | 22 |
| PaX-i Plus            | 24 |
| PaX-i Insight         | 28 |
| 3D Imaging            | 32 |
| Vatech A9             | 34 |
| PaX-i 3D Smart / Plus | 38 |
| Green X 12            | 42 |
| Green X 16            | 46 |
| Green X 18            | 50 |
| Software              | 56 |

# Intraoral Imaging





Meet Vatech's

# Intraoral Imaging

Vatech's lightweight X-ray devices are designed for easy handling and stable positioning for optimal image quality on your intraoral X-rays. Rounded corners and patient-oriented design of Vatech Intraoral sensors allow maximum comfortable placement against soft tissue.

**vatech**

# EzRay Air W2



## + CARBON NANO TUBE

The wall-mounted EzRay Air Wall 2 is a X-ray device weighing only 15.15 kg and it's designed for easy handling and stable positioning for optimal image quality on your intraoral X-rays. The lightweight carbon nano tube head provides users with a stable and easy-to-use X-ray source which maximizes image clarity and optimizes workflow.



## + EASY TO USE

The operating panel located on the tube head makes the work much easier and faster. The user can choose whether to capture image on the intraoral sensor or the PSP, and can also select the voltage 65/70 kV. After exposure, the dose is displayed on the main panel.



**THE MOST ADVANCED  
INTRAORAL X-RAY**

## + 5 MA & 65/70 KV - BETTER IMAGE QUALITY

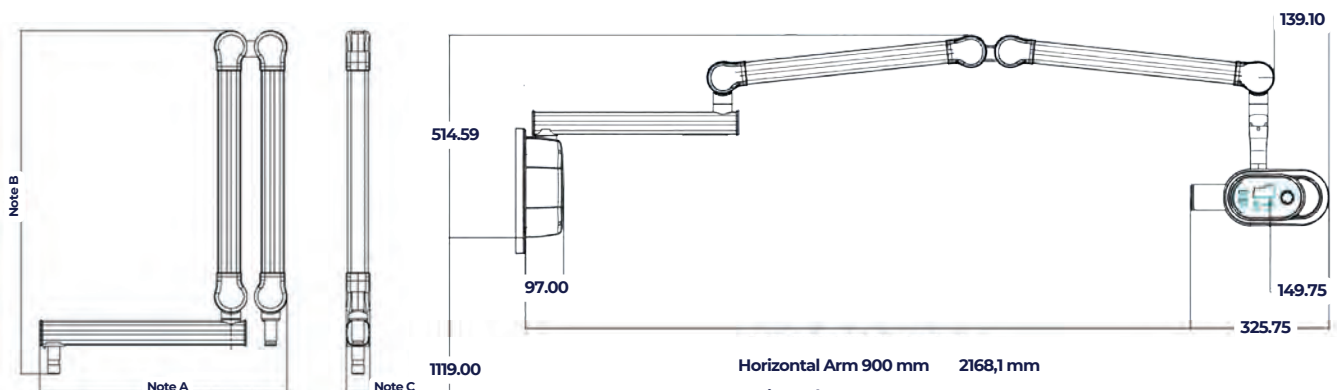
Top image quality is essential for accurate diagnosis and treatment planning. And you can be 100% sure that the EzRay Air Wall 2 provides optimal image quality and additional diagnostic value. High-quality IO images provided by EzRay Air Wall 2 will help you identify any cavities, tooth development, root health, and whether the tooth is anchored properly to the jaw bone.



## + SPECIFICATIONS

|                     |                    |                   |                                 |                                |   |
|---------------------|--------------------|-------------------|---------------------------------|--------------------------------|---|
| <b>Focal Spot</b>   | 0.4 mm (IEC 60336) | <b>Arm Length</b> | 450/600/900mm<br>*See note A    | <b>Exposure Time Range</b>     | 0.05 ~ 2 (0.01s increment)  |
| <b>Tube Voltage</b> | 65 / 70 kV         | <b>Duty Cycle</b> | 1:60 or more                    | <b>Source to Skin Distance</b> | Min. 20 cm  |
| <b>Tube Current</b> | 5.0 mA             | <b>Weight</b>     | 15.15 kg<br>(Arm Length 450 mm) | <b>X-ray Field</b>             | Default: : 60 mm Round; 30x40 mm Rectangular / Optional: 20x30 mm Rectangular |

## + DIMENSIONS



| Horizontal Arm Length | Note A (W) | Note B (L) | Note C (H) |
|-----------------------|------------|------------|------------|
| Horizontal Arm 900 mm | 1077       | 870,06     | 58,4       |
| Horizontal Arm 600 mm | 777        | 870,06     | 58,4       |
| Horizontal Arm 450 mm | 627        | 870,06     | 58,4       |

|                       |           |
|-----------------------|-----------|
| Horizontal Arm 900 mm | 2168,1 mm |
| Horizontal Arm 600 mm | 1868,1 mm |
| Horizontal Arm 450 mm | 1718,1 mm |

## + CARBON NANO TUBE

The wall-mounted EzRay Air Wall is a lightweight X-ray device designed for easy handling and stable positioning for optimal image quality on your intraoral X-rays. The EzRay Air Wall's lightweight tube head provides users with a stable and easy-to-use X-ray source which maximizes image clarity and optimizes workflow.



## + ONE SMART DIAL

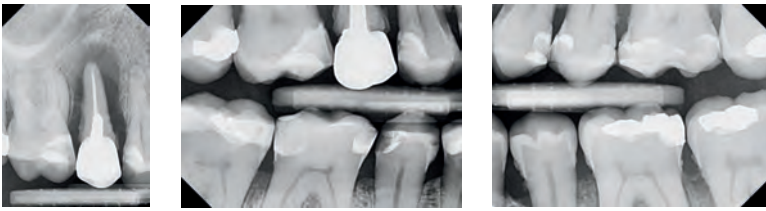
The operating panel, located on the tube head of EzRay Air Wall, creates a much simpler and faster workflow. Dentists who use the Smart Dial will immediately notice a decrease in preparation time. There will be no need to remember complicated control buttons and configurations.

**LIGHTWEIGHT INTRAORAL  
X-RAY WITH NO OIL**



## + SECURE CLEAR IMAGES WITH A 0.4MM FOCAL SPOT

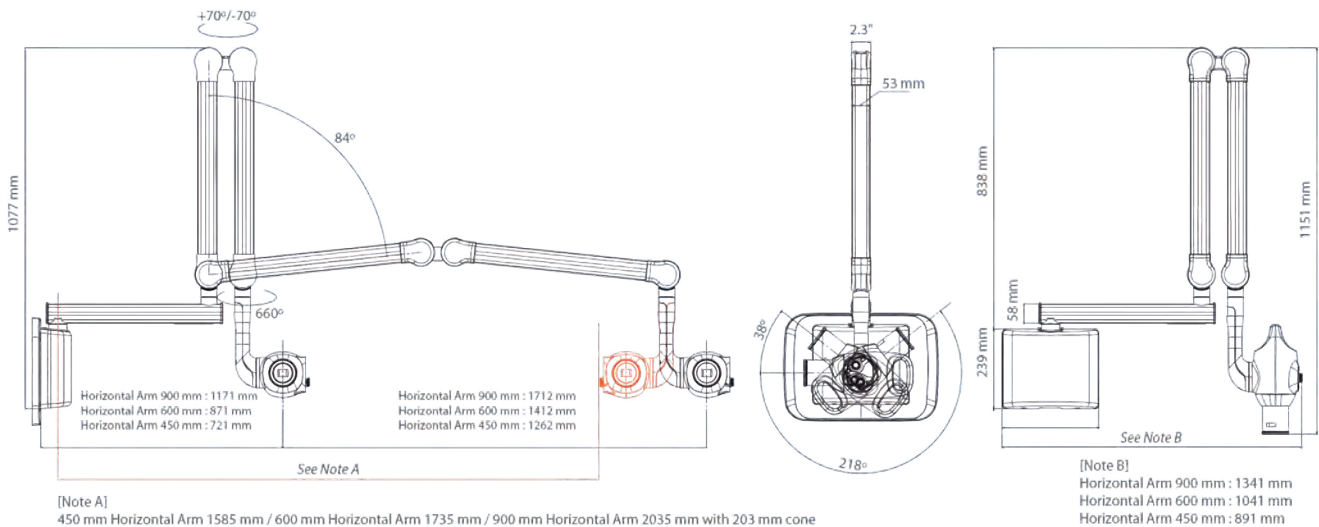
The EzRay Air Wall automatically adjusts the exact exposure parameters according to the angle of the tube, which reduces the time needed to take the image. Regardless of which intraoral sensor you use, the EzRay Air minimizes blur and provides additional diagnostic value with a 0.4mm focal spot.



## + SPECIFICATIONS

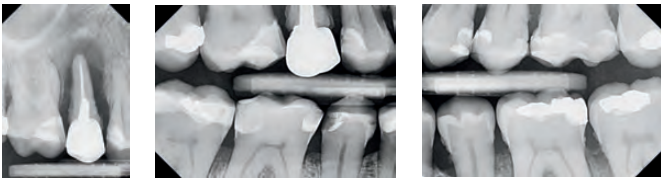
|                     |                    |                    |  |                                |   |
|---------------------|--------------------|--------------------|--|--------------------------------|---|
| <b>Focal Spot</b>   | 0.4 mm (IEC 60336) | <b>Arm Length</b>  | 450/600/900mm<br>*See note A                           | <b>Exposure Time Range</b>     | 0.05 ~ 0.5 (0.01s increment)  |
| <b>Tube Voltage</b> | 65 kV              | <b>Accessories</b> | Remote Exposure Switch (Hand Switch / Doorbell Switch) | <b>Source to Skin Distance</b> | Min. 20 cm  |
| <b>Tube Current</b> | 3.0 mA             | <b>Weight</b>      | 15.9 kg (Arm Length 450 mm)                            | <b>X-ray Field</b>             | Default: 60 mm Round, 30x40 mm Rectangular / Optional: 20x30 mm Rectangular |

## + DIMENSIONS



## + CARBON NANO TECHNOLOGY

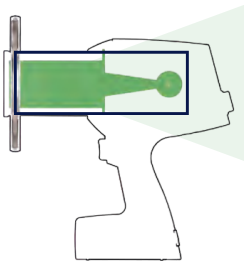
The world's first dental application of Carbon Nano Technology. Only 1.8 kg light portable intraoral X-ray creates a stable condition for positioning the device. The ease of device positioning produces clear images without any motion artifact. Handling a lightweight device is very convenient as it reduces the time taken to process a full-mouth series.



## + DOUBLE SCATTER SHIELD

Internal radiation shielding is perfectly designed to protect the operator from radiation leakage. Exposure to radiation results from the beam interacting with the surface of the patient, causing radiation to bounce off as radiation scatters in different directions. The Backscatter shield significantly reduces the amount of radiation being reflected.

INTERNAL SHIELDING



EXTERNAL SHIELDING



# WORLD'S FIRST CNT PORTABLE X-RAY

## + LOWER COOLDOWN TIMES FASTER WORKFLOW

Due to unique efficiencies in carbon-nano technology which aren't available in traditional X-ray generation methods, the EzRay Air Portable has almost a 75% reduction in cooldown time between shots when compared to leading competitive devices. This allows users to spend less time waiting for their X-ray to be ready and more time for treatment, diagnosis, and patient.



## + NO WARMUP TIME

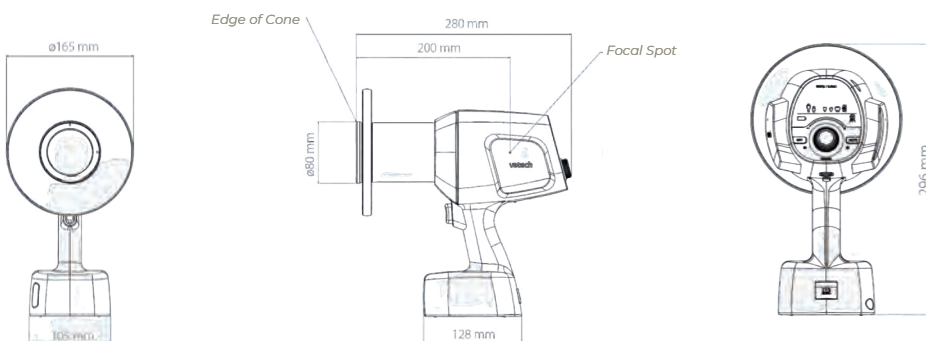
With no initial start-up delay for conventional X-ray sources to warm up, the EzRay Air Portable's Carbon Nano Technology allows for quicker exposure after you initially turn on the device, allowing for optimal workflow.



## + SPECIFICATIONS

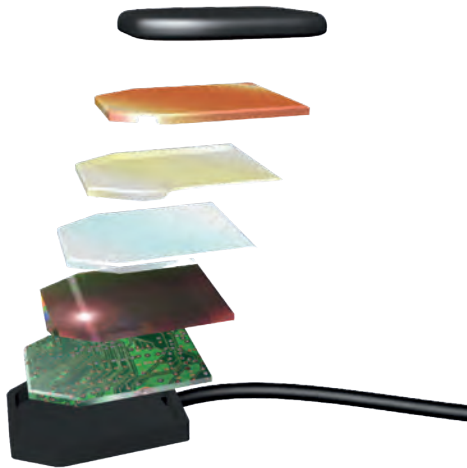
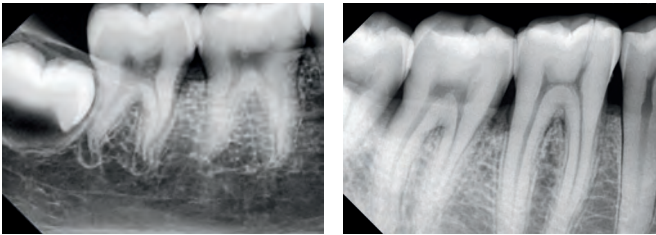
|                     |  |                                |                                  |                            |              |
|---------------------|--|--------------------------------|----------------------------------|----------------------------|--------------|
| <b>Focal Spot</b>   | 0.4 mm (IEC 60336)                           | <b>Total Filtration</b>        | Min. 1.5 mm Al                   | <b>Exposure Time Range</b> | 0.05 ~ 1 sec |
| <b>Tube Voltage</b> | 65 kV  | <b>Source to Skin Distance</b> | 20 cm                            | <b>Maximum duty cycle</b>  | 1 : 30       |
| <b>Tube Current</b> | 2.5 mA                                       | <b>Weight</b>                  | 1.9 kg                           |                            |              |
| <b>X-ray Field</b>  | Default: 60 mm Round, 30 x 40 mm Rectangular |                                | Optional: 20 x 30 mm Rectangular |                            |              |

## + DIMENSIONS



## + ULTRA SLIM DESIGN

Slim CMOS ensures that patients are as comfortable as possible. Through extensive testing, VATECH R&D Center found the optimal thickness that minimizes patients' pain, and they led the technology with a CMOS chip while maintaining the thickness.



## + EXPERIENCE THE HIGH RESOLUTION

Image quality is guaranteed by high-definition, a theoretical resolution of 33.78 lp/mm associated with 14.8  $\mu\text{m}$  pixel. EzSensor HD provides the most distinct images possible and combined with noise and artifact reduction, the results are clear and consistent.

**MAKE YOUR OPERATION  
EASY & PROFESSIONAL**

## + COMFORTABLE PLACEMENT AGAINST SOFT TISSUE

The rounded corner design allows maximum comfortable placement against soft tissue. Ergonomically designed sensors in 3 different sizes meet the needs of various cases. The rounded & cut edges provide the best possible comfort for the patients. Vatech's unique size 1.5 sensor fits almost all patients.



## + POWERFUL CONSULTATION



What is the benefit of a good consultation tool? One animation is worth a thousand words! Use a set of more than 200 clinical case animations and make your consultation more powerful.

## + SPECIFICATIONS

|                            |            |                            |              |                               |             |
|----------------------------|------------|----------------------------|--------------|-------------------------------|-------------|
| <b>Detector</b>            | CMOS       | <b>Pixel Size</b>          | 14.8 $\mu$ m | <b>Theoretical Resolution</b> | 33.78 lp/mm |
| <b>Dynamic Range</b>       | 12 bit     | <b>Thickness</b>           | 4.8mm        | <b>Cable Length</b>           | 2.7 m       |
| <b>Active Area / S 1.0</b> | 20 x 30 mm | <b>Active Area / S 1.5</b> | 24 x 33 mm   | <b>Active Area / S 2.0</b>    | 26 x 36 mm  |

### Size 1.0



### Size 1.5



### Size 2.0



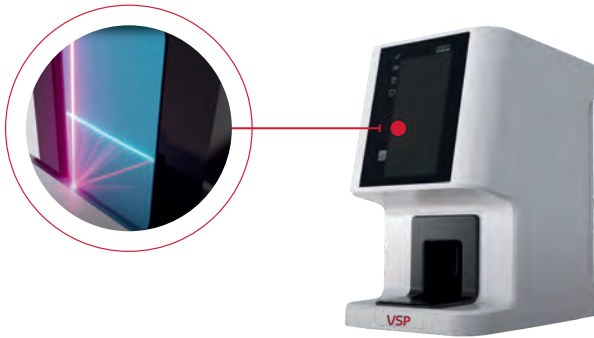
## + 4-INCH PREVIEW SCREEN

Vatech has launched the Vatech VSP, a small, lightweight, and compact PSP scanner that will surprise you with its image quality and user-friendly operation. Weighing just 3.3 kg and measuring 23 x 14 cm, the VSP is one of the smallest and lightest scanners on the market. It may be small, but it has a 4-inch touchscreen display that allows the largest preview of the scanned image.

The VSP scanner is an ideal tool for all specialists, thanks to its 10lp/mm resolution you can easily capture high-quality images, e.g., for implantology, endodontics, or restorative dentistry.



## + MULTI-PIXEL PHOTO COUNTER



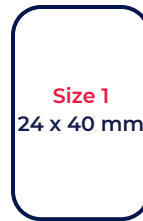
The world's first PSP Scanner was created using MPPC. MPPC is short for Multi-pixel photon counters. What sets MPPC apart from the existing PMT is immunity to magnetic fields, and high resistance to mechanical shock. Also, the MPPC is lower than 10 times the voltage operation, and more than that 10 times high gain can be obtained when compared to PMT (Photo Multiplier Tube).

**SMALL, LIGHTWEIGHT &  
COMPACT PSP SCANNER**

## + 4 SIZES OF IMAGING PLATES

The VSP comes with flexible imaging plates in 4 different sizes. Cableless, thin, and soft imaging plates optimally stick to various oral shapes to provide high-quality images while maintaining maximum comfort for the patient.

Image plates are highly durable and reduce the risk of damage. At the same time, Ultrathin imaging plates can be reused over and over while keeping great image quality.



## + QUICK CONNECTION TO THE DATABASE

The VSP scanner can be connected to the EzDent-i software and started using it immediately via the TWAIN interface. Images are automatically saved to your database where they are stored and instantly available, plus the scanner can be shared by multiple users.

## + SPECIFICATIONS

|                             |                     |                                |                          |
|-----------------------------|---------------------|--------------------------------|--------------------------|
| <b>Supported IP</b>         | Size 0 / 1 / 2 / 3  | <b>Resolution</b><br>(lp/mm)   | SR 20lp/mm<br>HR 10lp/mm |
| <b>Display</b>              | 4-inch touch screen | <b>Interface</b>               | Ethernet                 |
| <b>Multi-user practices</b> | Yes                 | <b>Sleep mode</b>              | Yes                      |
| <b>Weight</b>               | 3.3 Kg              | <b>Dimensions</b><br>(HxWxDmm) | 233 x 141 x 191.5        |

## + BRING SIMPLICITY TO YOUR WORKDAY

The EzScan solution includes a pre-calibrated scanner, three autoclavable tips, and an optimized acquisition PC with the EzScan software pre-installed to ensure that you spend less time installing and more time scanning.

The EzScan-i features an intuitive, user-friendly interface that makes it easier than ever to meet all your restorative, orthodontic, and implant needs.



## + QUICK SCAN TIME

Compared to most other scanners on the market, the EzScan has an impressive scanning speed. With EzScan you can achieve a full arch scan in 60 seconds.

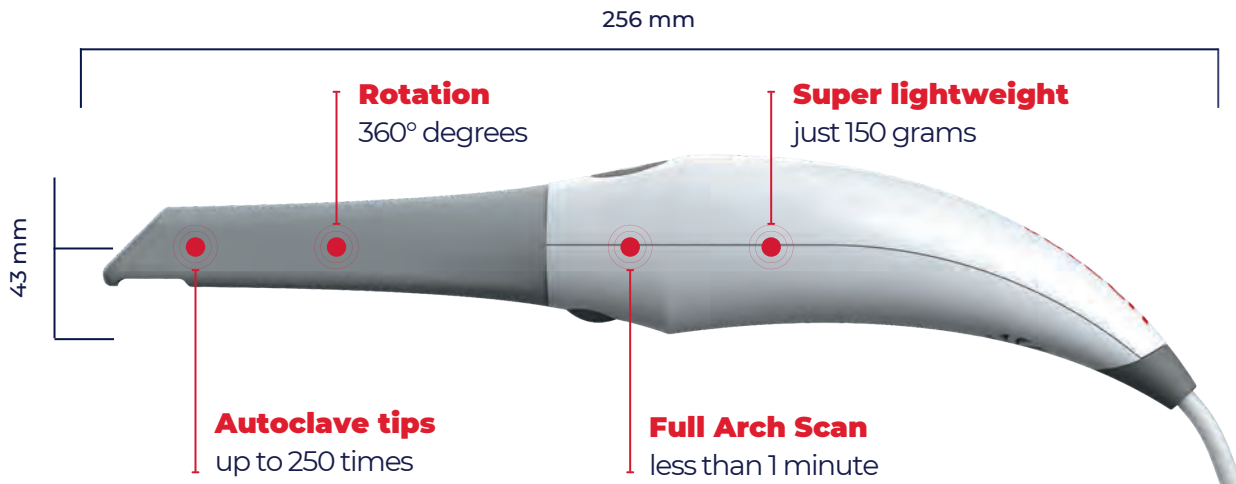
The software is very simple and easy to use. EzScan has Artificial Intelligence (AI) built into the scanning software, which quickly reorientates itself after pausing and restarting the scan

**ERGONOMIC & SUPER  
LIGHTWEIGHT SCANNER**



## + ERGONOMIC & SUPER LIGHTWEIGHT

EzScan is one of the lightest scanners on the market, weighing 150 grams. EzScan is very ergonomically designed and fits well in the hand thanks to the curved design of the scanner body. You will immediately notice the lightness of the scanner.



## + OPEN PLATFORM WITH NO CONTINUED FEES

EzScan Cloud is a user-friendly module for sharing digital impressions with the lab of your choice.

With an open platform you can enjoy effortless export to your treatment planning software and automatic updates at no additional cost.

## + SPECIFICATIONS

|                            |                  |                    |                          |
|----------------------------|------------------|--------------------|--------------------------|
| <b>FOV</b>                 | 12 x 14 mm       | <b>Features</b>    | True Color / Powder Free |
| <b>Scan Time</b>           | Less than 1 min. | <b>File Output</b> | STL, PLY, OBJ            |
| <b>STL Converting Time</b> | Less than 1 min. | <b>System</b>      | Open                     |
| <b>Weight</b>              | 150 g            | <b>Connector</b>   | USB Type-A               |

## + WE MAKE EVERY SINGLE IMAGE SHARP & CLEAR

With EzCam, you don't need to remember each setting. Its simple user interface will reduce the use time and make work simpler and faster.

When the camera is turned on, auto-focus mode starts. With a focus range of 9mm~35mm, the camera will automatically focus according to the distance between the camera and the filmed object, which means no manual adjustments are required. EzCam is also equipped with an aspheric lens which causes less image distortion and provides excellent image quality, suitable for diagnosis.



## + MINIMIZED MOTION ARTIFACT

Two capture buttons minimize motion artifacts even in maxillary photography



As there are two capture buttons on both the left and right sides of the camera, the thumb and index finger can provide support for each other, which results in stable positioning minimizing motion artifacts. This button arrangement lets you stay much stable even in maxillary photography.

**MAKE YOUR WORK  
SIMPLER AND FASTER**

## + PLUG & PLAY

### No need USB Driver to install

Ready to use by connecting only the cable

### No need to capture program install

Many other companies' software require an installation of a capture program to send an image capture signal. But EzCam doesn't require any installation, as it can create a capture key value by itself.



## + INTUITIVE & AUTO ON/OFF CONTROL

Once your viewing software is turned on, EzCam and its camera lens light will turn on and the camera status indicator will turn green.

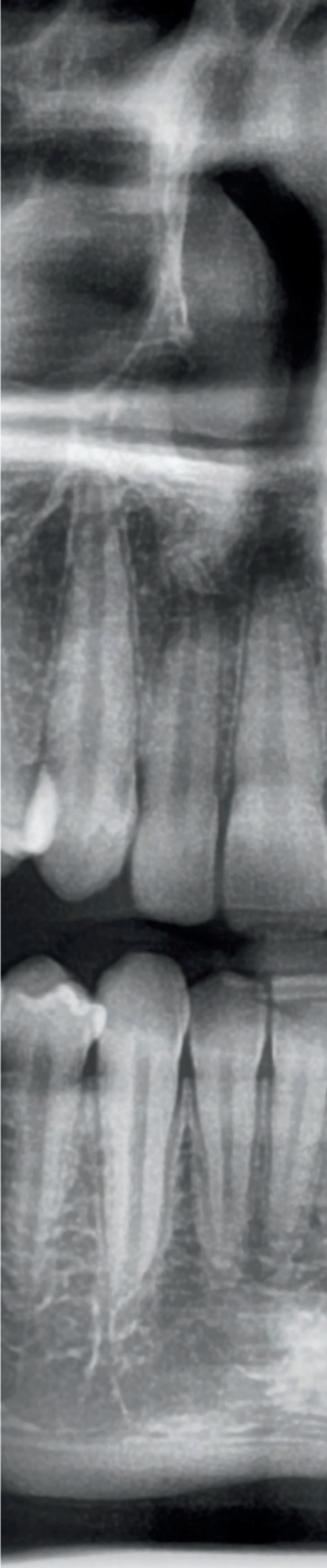
When you close the viewing software, EzCam and its camera lens light will automatically turn off and the camera status indicator will turn blue.



## + SPECIFICATIONS

|                     |                     |                        |                         |
|---------------------|---------------------|------------------------|-------------------------|
| <b>Image Sensor</b> | CMOS / 5 Mega pixel | <b>Focus Range</b>     | 9 mm~35 mm (Auto focus) |
| <b>Resolution</b>   | 1280 x 720          | <b>Angle of View</b>   | 62°                     |
| <b>Light Source</b> | 2 White LEDs        | <b>Dimensions</b>      | 198 x 24 x 23 mm        |
| <b>Weight</b>       | 39.5 g              | <b>Length of cable</b> | USB2.0 / 3m (Option:5m) |

# 2D Imaging





Meet Vatech's

# 2D Imaging

Vatech 2D units provide the most precise and high-quality panoramic images by combining image processing and accumulated experience in dental imaging from Vatech. This will increase your diagnostic accuracy for improved treatment planning and patient satisfaction.

**vatech**

# PaX-i



**Up to 5-Year Full Parts Warranty**  
**Up to 5-Year Warranty Sensors & Generator**

**Superior image quality**  
Optimal image for accurate diagnosis

**User-friendly software**  
Complete diagnostic & consultation solution

**YOUR PANO PARTNER  
IN DIGITAL SUCCESS**

**vatech**

## + THE ADVANCED IMAGING SOLUTION

The images from PaX-i provide a detailed view of the patient's teeth, roots and surrounding structures, allowing dentists to accurately diagnose various dental problems. This includes detecting cavities, assessing the extent of decay, identifying impacted teeth and evaluating bone structure.



## + SCAN CEPH TECHNOLOGY ~ 1.9 SEC

Vatech's Scan Ceph minimizes motion artifacts and enables faster diagnostic workflow while providing the highest quality digital images.

### Experience Auto Tracing with EzOrtho SW

With AI, recognition of cephalometric points and soft tissues are identified on the cephalometric image automatically within seconds.



## + IMAGES EXCLUSIVELY DESIGNED FOR ORTHO

The PaX-i provides optimal images exclusively designed for orthodontics. There are 2 image sizes available, Lateral and Full Lateral, allowing you to choose your image size based on your diagnostic needs. A full lateral image size is 30 % wider and shows the occipital area of the patient, which enables comprehensive diagnosis.

**LATERAL**



**FULL LATERAL**



## + 2 DEDICATED SENSORS

The PaX-i offers two dedicated and embedded sensors for Pano and Ceph. This not only allows you to capture an optimal image from each sensor, but it also creates an efficient workflow. Images from PaX-i are super quick to capture, with minimal discomfort for the patient. This efficiency allows dentists to obtain necessary diagnostic information promptly, which can be crucial for emergency cases or busy practices.





## + CONFIGURATION

|       | Pano | Ceph |          | Pano | Ceph |
|-------|------|------|----------|------|------|
| PaX-i | ✓    | ✗    | PaX-i SC | ✓    | ✓    |

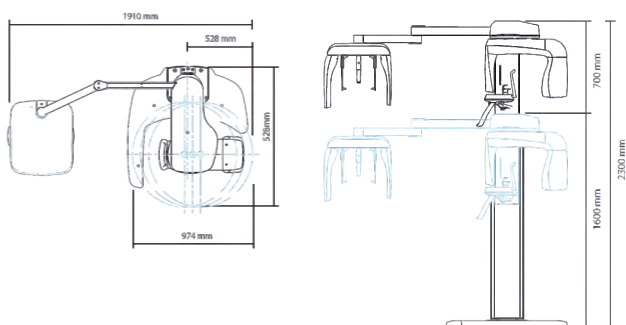


## + SPECIFICATIONS

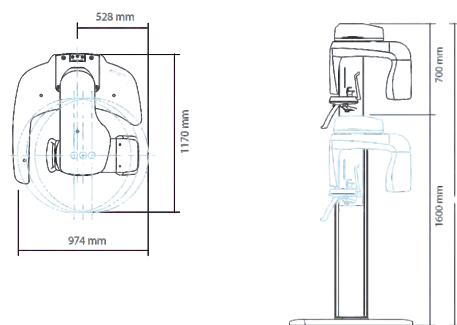
|                               |   |
|-------------------------------|---|
| <b>Function (Device Type)</b> | Pano + Ceph   |
| <b>Focal Spot Size</b>        | 0.5 mm (IEC60336)   |
| <b>Scan Time</b>              | PANO   Normal ~ 10.1 sec<br>PANO   HD ~ 13.5 sec<br>Ceph   Scan ~ 12.9 sec<br>Ceph   One Shot ~ 0.9 sec |
| <b>Gray Scale</b>             | 14 Bit  |
| <b>Tube Voltage / Current</b> | 50-90 kVp / 4-10 mA   |
| <b>Weight</b>                 | 95 kg (without Base)<br>135 kg (with Base)  |
| <b>Dimension</b>              | 974 mm (L) x 1170 mm (W) x 2300 mm (H)  |
| <b>SW</b>                     | EzDent-i / EzOrtho  |

## + DIMENSIONS

with CEPH



without CEPH



# PaX-i Plus



**Up to 5-Year Full Parts Warranty**  
**Up to 10-Year Warranty Sensors & Generator**

**Superior image quality**  
Optimal image for accurate diagnosis

**2 dedicated sensors**  
Specialized sensors for Pano & Ceph.  
Streamlined workflow and prolonged  
lifespan of sensors



**PREMIUM PANORAMIC  
IMAGE QUALITY**

**vatech**

## + THE ADVANCED IMAGING SOLUTION

The images from PaX-i Plus provide a detailed view of the patient's teeth, roots and surrounding structures, allowing dentists to accurately diagnose various dental problems. This includes detecting cavities, assessing the extent of decay, identifying impacted teeth, and evaluating bone structure.



## + RAPID CEPH TECHNOLOGY - 1.9 SEC

1.9 second acquisition time produces superb image quality. Vatech's new Rapid Ceph minimizes motion artifacts and enables faster diagnostic workflow while providing the highest quality digital images.

### RAPID CEPH

You can significantly minimize the motion artifacts and acquire the orthodontic images of the patient within 1.9 second



### AUTO TRACING

With AI, recognition of cephalometric points and soft tissues are identified on the cephalometric image automatically within seconds



## + IMAGES EXCLUSIVELY DESIGNED FOR ORTHO

The PaX-i Plus provides optimal images exclusively designed for orthodontics. There are 2 image sizes available, Lateral and Full Lateral, allowing you to choose your image size based on your diagnostic needs. A full lateral image size is 30 % wider and shows the occipital area of the patient, which enables comprehensive diagnosis.

**LATERAL**

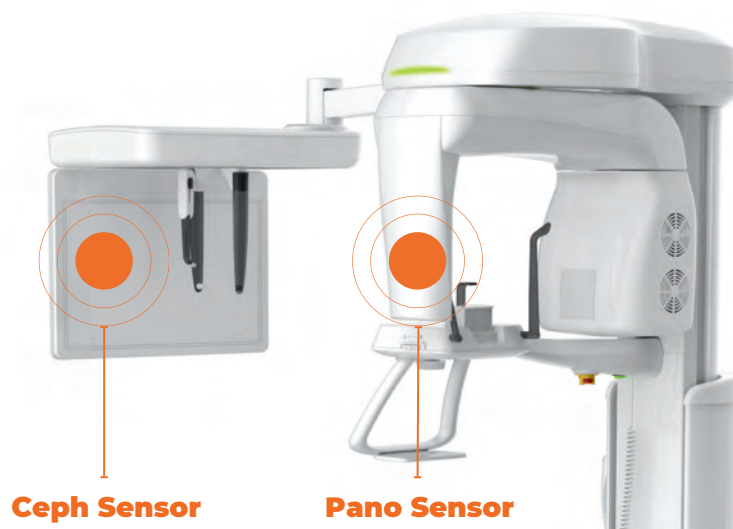


**FULL LATERAL**



## + 2 DEDICATED SENSORS

The PaX-i Plus offers two dedicated and embedded sensors for Pano and Ceph. This not only allows you to capture an optimal image from each sensor, but it also creates an efficient workflow. Images from PaX-i Plus are super quick to capture, with minimal discomfort for the patient. This efficiency allows dentists to obtain necessary diagnostic information promptly, which can be crucial for emergency cases or busy practices.



## + CONFIGURATION

|            | Pano | Ceph |               | Pano | Ceph |
|------------|------|------|---------------|------|------|
| PaX-i Plus | ✓    | ✗    | PaX-i Plus RC | ✓    | ✓    |

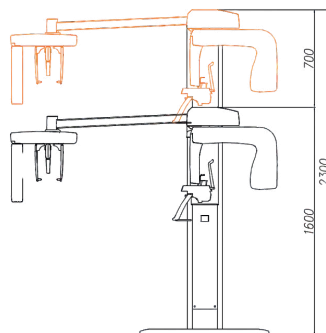
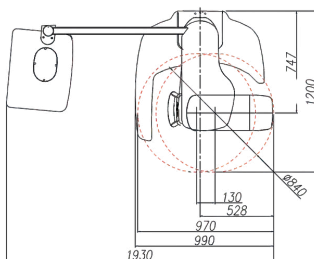


## + SPECIFICATIONS

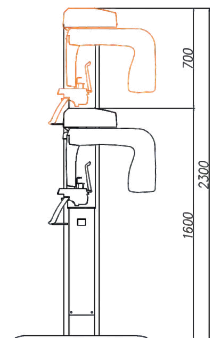
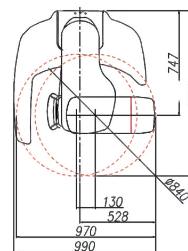
|                        |  |
|------------------------|--|
| Function (Device Type) | Pano + Ceph  |
| Focal Spot Size        | 0.5 mm (IEC60336)  |
| Scan Time              | PANO   Normal ~ 10.4 sec<br>PANO   HD ~ 14 sec<br>Ceph 1.9 / 3.9 sec |
| Gray Scale             | 14 Bit   |
| Tube Voltage / Current | 60 - 99 kVp / 4 - 16 mA  |
| Weight                 | 95 kg (without Base)<br>135 kg (with Base)                           |
| Dimension              | 990 mm (L) x 1200 mm (W) x 2300 mm (H)                               |
| SW                     | EzDent-i / EzOrtho   |

## + DIMENSIONS

with CEPH



without CEPH





**Up to 10-Year Full Parts Warranty**  
**Up to 10-Year Warranty Sensors & Generator**

**+ Insight Pan**

The next evolutionary step forward in panoramic imaging with Insight Pan

**+ Rapid Ceph**

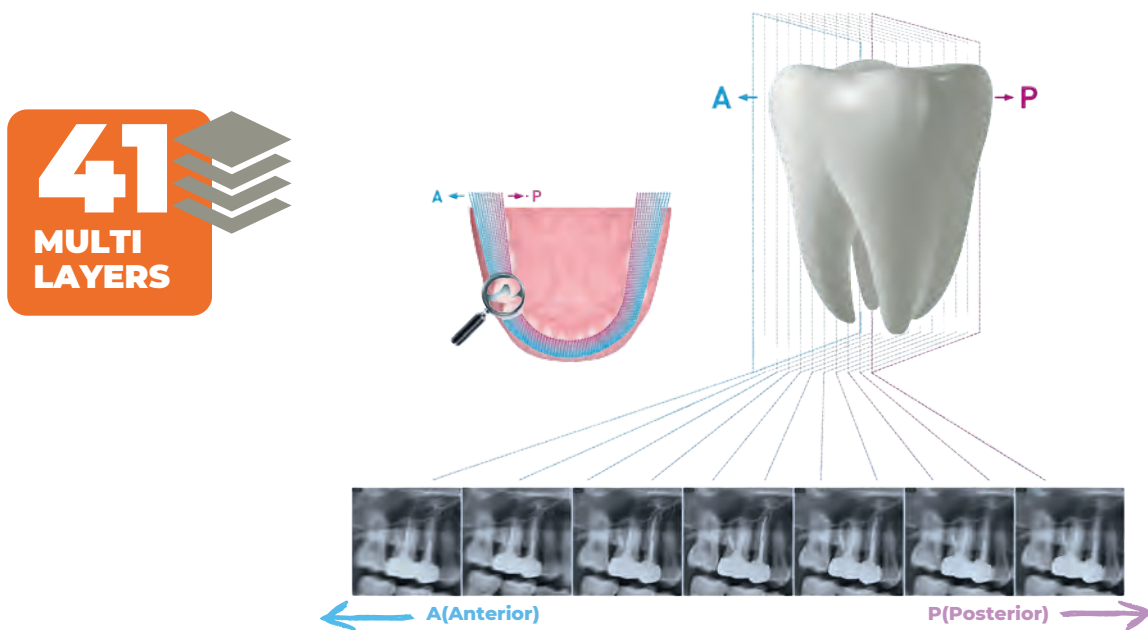
1.9 second acquisition time produces superb image quality - Reduced motion artifacts and faster workflow



**DEPTH ADDED PANO  
IMAGES WITH 41 LAYERS**

## + 41-LAYER DIGITAL PANORAMIC IMAGES

While the conventional panoramic systems may miss important details that land outside of a single focal trough, the PaX-i Insight is capable of taking multi-layered images and providing an in-depth look. Having the option to choose from a variety of images, the Insight Pan offers clinicians to explore 41 images (each sliced in 1 mm) when exploring their region of interest. This feature not only provides an accurate diagnosis for periapical diseases, periodontitis, and pericoronitis but also allows clinicians to find hidden roots and canals.



## + EXPERIENCE AUTO TRACING WITH EZORTHO SW

With AI, recognition of cephalometric points and soft tissues are identified on the cephalometric image automatically within seconds. One notable feature of the PaX-i Insight is the 1.9 sec acquisition time.

### RAPID CEPH

You can significantly minimize the motion artifacts and acquire the orthodontic images of the patient within 1.9 second



### AUTO TRACING

With AI, recognition of cephalometric points and soft tissues are identified on the cephalometric image automatically within seconds



## + WHAT IS INSIGHT?

The next evolutionary step forward in panoramic imaging. You can take a multi-layered panoramic image called an Insight Pan which provides a unique, in-depth look across a single focal trough. Since each patient may have a slightly different arch, conventional panoramic images may occasionally miss important details that land outside of a single focal layer. Insight Pans are capable of capturing multiple-layered images, ensuring that all details are captured in a depth-added panoramic image.

### Standard Panorama



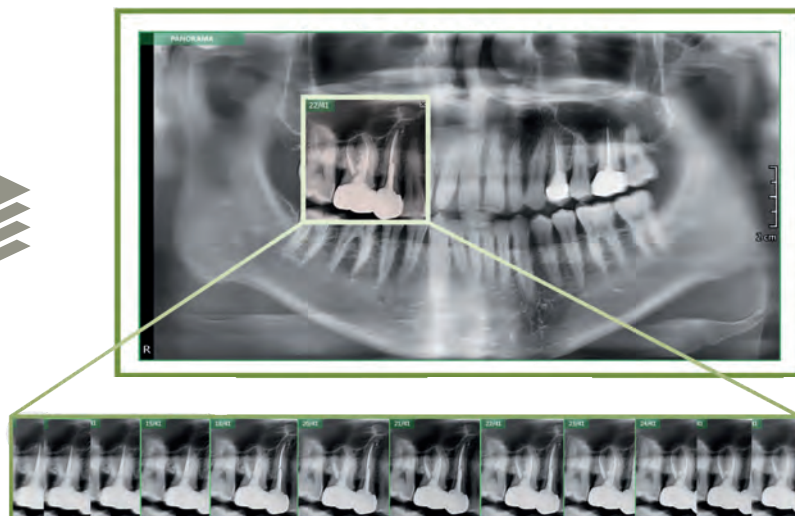
### Insight Feature



Check  
→ #16 Root Palatal

## + NEXT GENERATION PANORAMIC IMAGES

Our next-generation Insight Pans allow doctors to obtain never-before-seen in-depth diagnostic information, from anterior to posterior, on a digital panoramic image. The Insight feature allows doctors to explore their region of interest while giving them the capability to find mesiobuccal, distobuccal, and palatal root information.





## + CONFIGURATION

|               | Pano | Ceph |                  | Pano | Ceph |
|---------------|------|------|------------------|------|------|
| PaX-i Insight | ✓    | ✗    | PaX-i Insight RC | ✓    | ✓    |

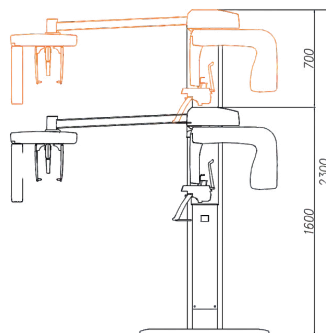
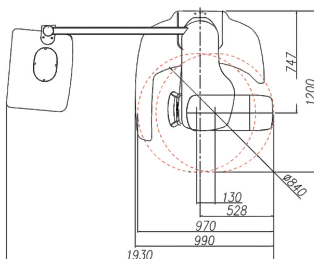


## + SPECIFICATIONS

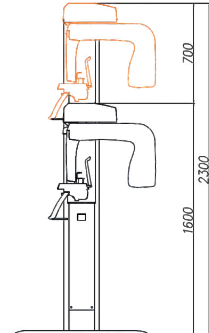
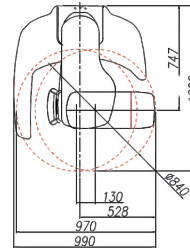
|                               |   |
|-------------------------------|---|
| <b>Function (Device Type)</b> | Pano + Ceph   |
| <b>Focal Spot Size</b>        | 0.5 mm (IEC60336)   |
| <b>Scan Time</b>              | PANO   Normal ~ 10.4 / 14 / 21 sec<br>PANO   Insight Pan ~ 10.4 sec<br>Ceph 1.9 / 3.9 sec |
| <b>Gray Scale</b>             | 14 Bit  |
| <b>Tube Voltage / Current</b> | 60 - 99 kVp / 4 - 16 mA   |
| <b>Weight</b>                 | 95 kg (without Base)<br>135 kg (with Base)  |
| <b>Dimension</b>              | 990 mm (L) x 1200 mm (W) x 2300 mm (H)  |
| <b>SW</b>                     | EzDent-i / EzOrtho  |

## + DIMENSIONS

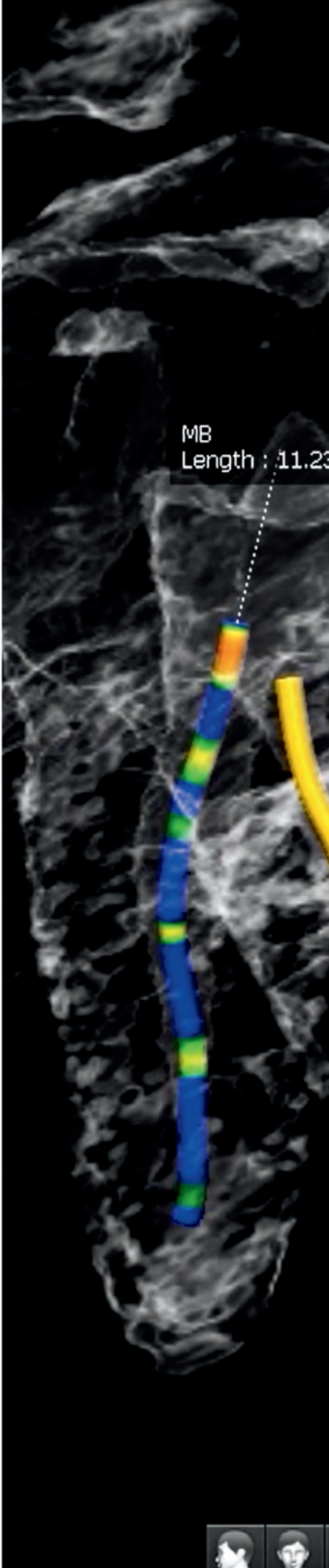
with CEPH

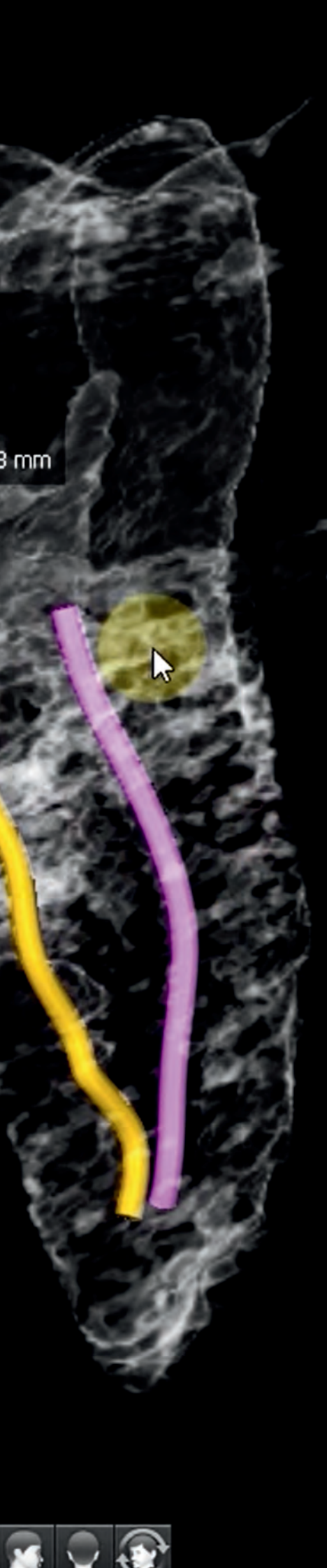


without CEPH



# 3D Imaging





Meet Vatech's

# 3D Imaging

Vatech 3D CBCT units produce superb diagnostic images, which will be a source of pride for any dental practice. Focusing on the highest quality of patient care, Vatech strives to improve the health and safety of your patients.

**vatech**

# A9



**⊕ Up to 5-Year Full Parts Warranty**  
**Up to 5-Year Warranty Sensors & Generator**

**⊕ Integral FOV for 3D image**  
10x8 images enable fundamental  
diagnoses and treatment planning

**⊕ Level Up to a brand-new 3D unit**  
A Unique offer for exchanging your old  
panoramic X-ray system (any brand) for  
a brand-new Vatech 3D unit

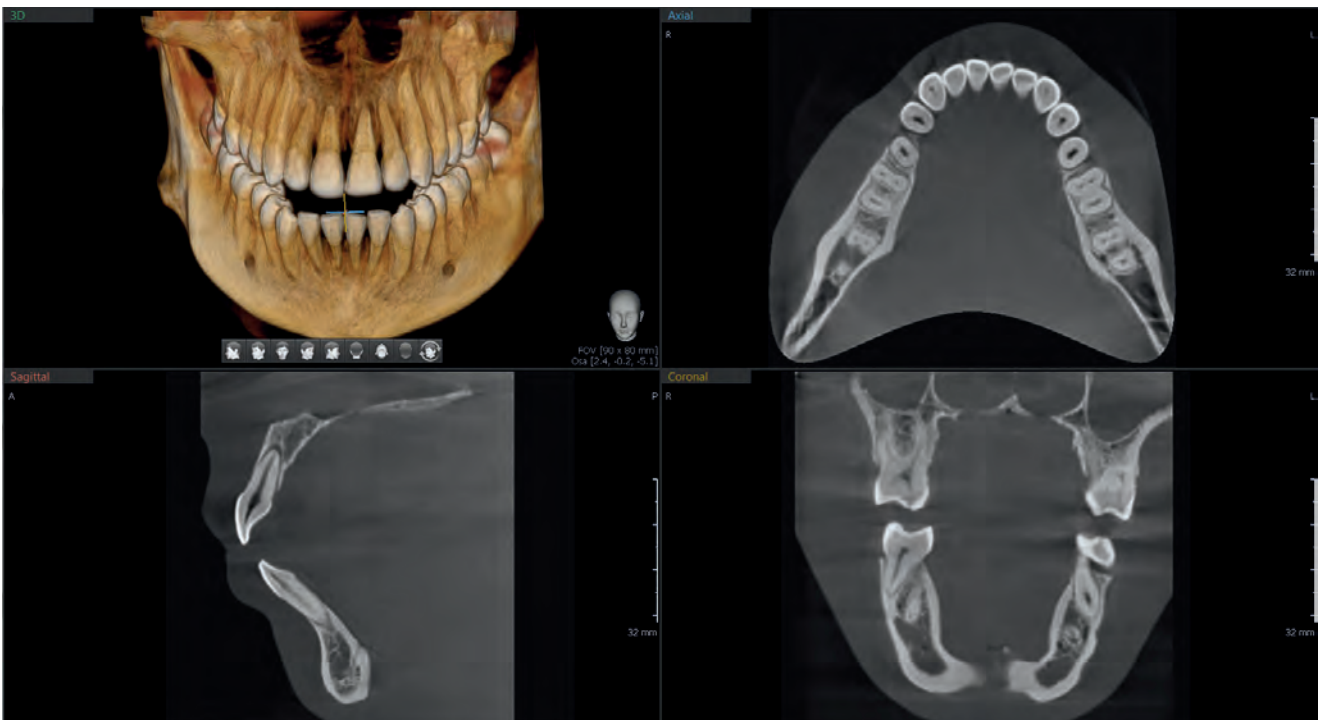


**LET'S START YOUR  
3D CBCT JOURNEY**

**vatech**

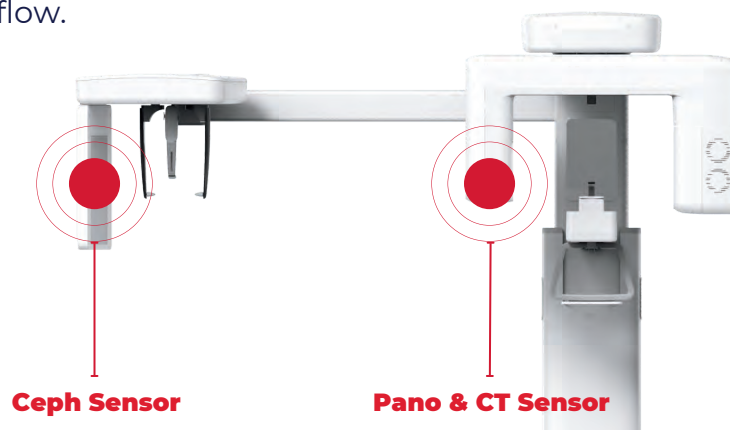
## + INTEGRAL FOV FOR 3D IMAGE

The 10×8 images provided by the A9 allow fundamental diagnosis and treatment planning, including both the maxillary and mandibular areas, in a single scan. The Vatech A9 3D CBCT unit is the perfect choice for any dental clinic that is looking to expand its practice by providing higher-value treatments such as orthodontics and implantology.



## + 2 DEDICATED SENSORS

The A9 offers 2 dedicated and embedded sensors for Pano / 3D CBCT and Ceph. This not only allows you to capture an optimal image from each sensor, but it also creates an efficient workflow.



## + EXCHANGE YOUR OLD 2D FOR A NEW 3D CBCT

The A9 provides the most precise and high-quality 2D and 3D images by combining image processing and accumulated experience in dental imaging from Vatech. When taking 2D images, you'll appreciate the MAGIC PAN function, which uses hundreds of layers of panoramic images during acquisition. Vatech's artificial intelligence examines all the layers, reconstructs them, and provides the optimal diagnostic image. The A9 will increase your diagnostic accuracy for improved treatment planning and patient satisfaction.



## + EXPERIENCE AUTO TRACING WITH EZORTHO SW

With AI, recognition of cephalometric points and soft tissues are identified on the cephalometric image automatically within seconds. One notable feature of the PaX-i Insight is the 1.9 sec acquisition time.

### RAPID CEPH

You can significantly minimize the motion artifacts and acquire the orthodontic images of the patient within 1.9 second



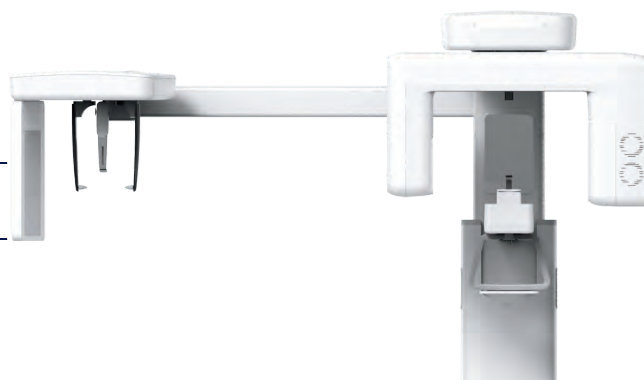
### AUTO TRACING

With AI, recognition of cephalometric points and soft tissues are identified on the cephalometric image automatically within seconds



## + CONFIGURATION

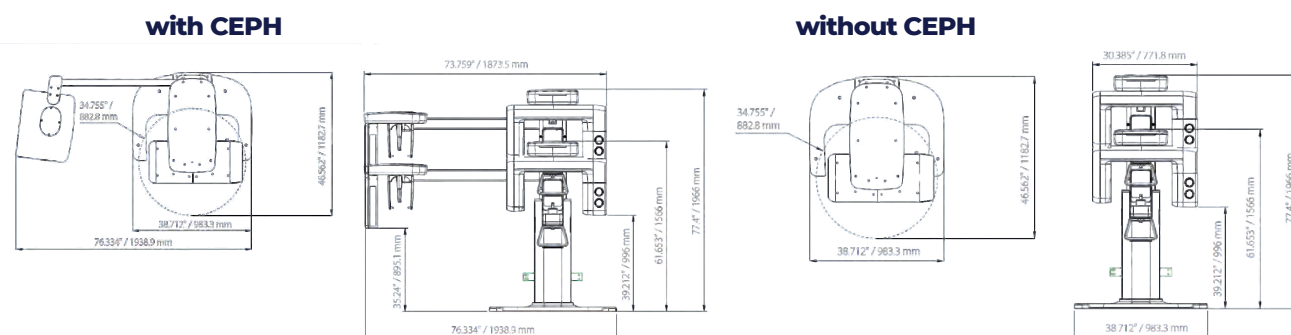
|              | CBCT | Pano | Ceph |
|--------------|------|------|------|
| Vatech A9    | ✓    | ✓    | ✗    |
| Vatech A9 RC | ✓    | ✓    | ✓    |



## + SPECIFICATIONS

|                        |   |
|------------------------|---|
| Function (Device Type) | CT + Pano + Ceph  |
| Voxel Size             | 0.2 mm / 0.3 mm   |
| Focal Spot Size        | 0.5 mm  |
| FOV Size               | 8x8 cm (10x8 cm Anatomical)                               |
| Exposure Time          | Pano: 2.7-13.5 sec<br>Ceph: 1.9-5.4 sec<br>CBCT: 15.5 sec |
| Dynamic range          | 14 bit  |
| Tube Voltage / Current | 60 - 99 kVp/ 4 -12 mA                                     |
| Patient position       | Seated patient / Wheelchair Accessible                    |
| Dimension              | 983.3(L)×1182.7(W)×1996 (H) mm                            |
| Weight                 | 160,5 kg (without Ceph)<br>186,5 kg (with the Ceph)       |
| SW                     | EzDent-i / Ez3D-i / EzOrtho                               |

## + DIMENSIONS



# Smart · Smart Plus



**+** Up to 5-Year Full Parts Warranty  
Up to 10-Year Warranty Sensors & Generator

**+** One Scan, Two Images

**+** Innovative compressed sensing technology

**+** Extended Arch Shaped FOV

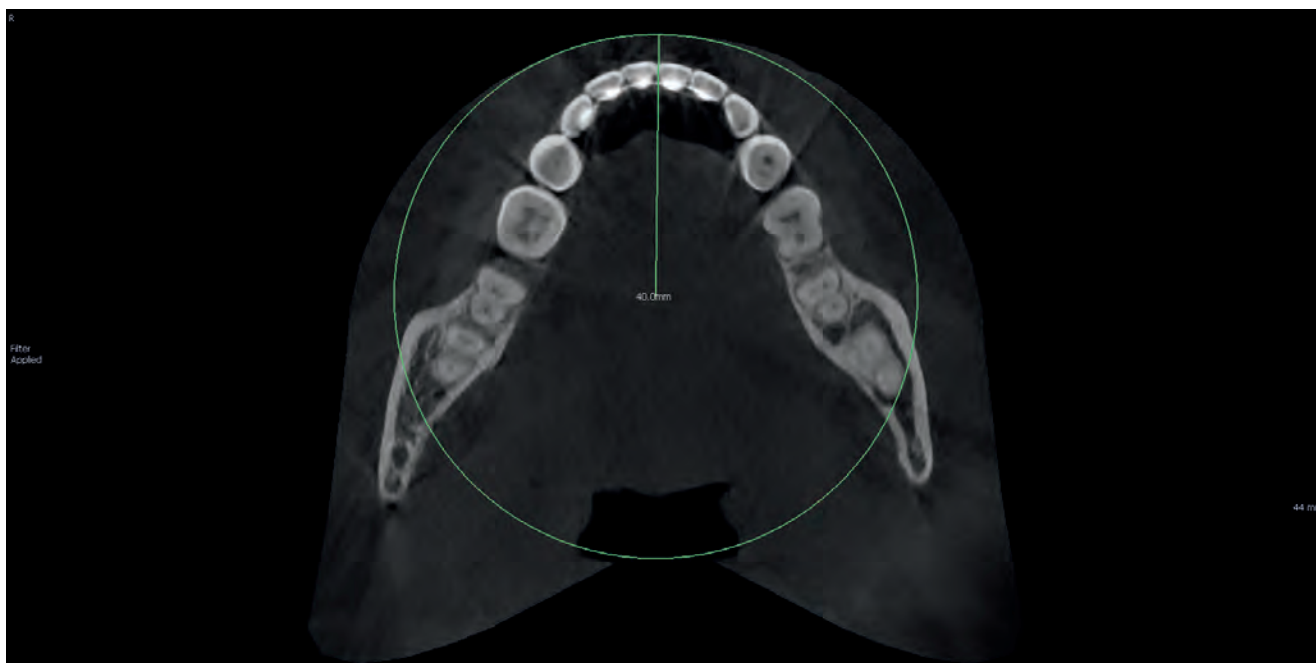
**SMART INNOVATIONS  
FOR YOUR DIAGNOSIS**

**vatech**



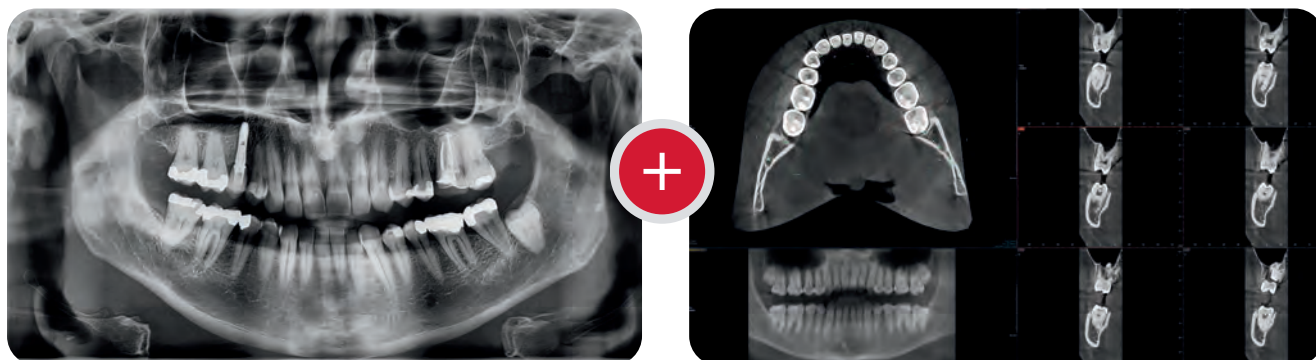
## + EXTENDED ARCH SHAPED FOV

The Smart & Smart Plus' innovative FOV (12×9) provides an arcuate arch-shaped volume that shows a wider view of the teeth compared to other devices with the same FOV. Usually, a 10×8.5 FOV image shows tooth #8. However, if the tooth is lying on its side, there is a high probability that it will be cut out of the image. The “arch-shaped volume” reduces this risk and shows the hidden area of the tooth



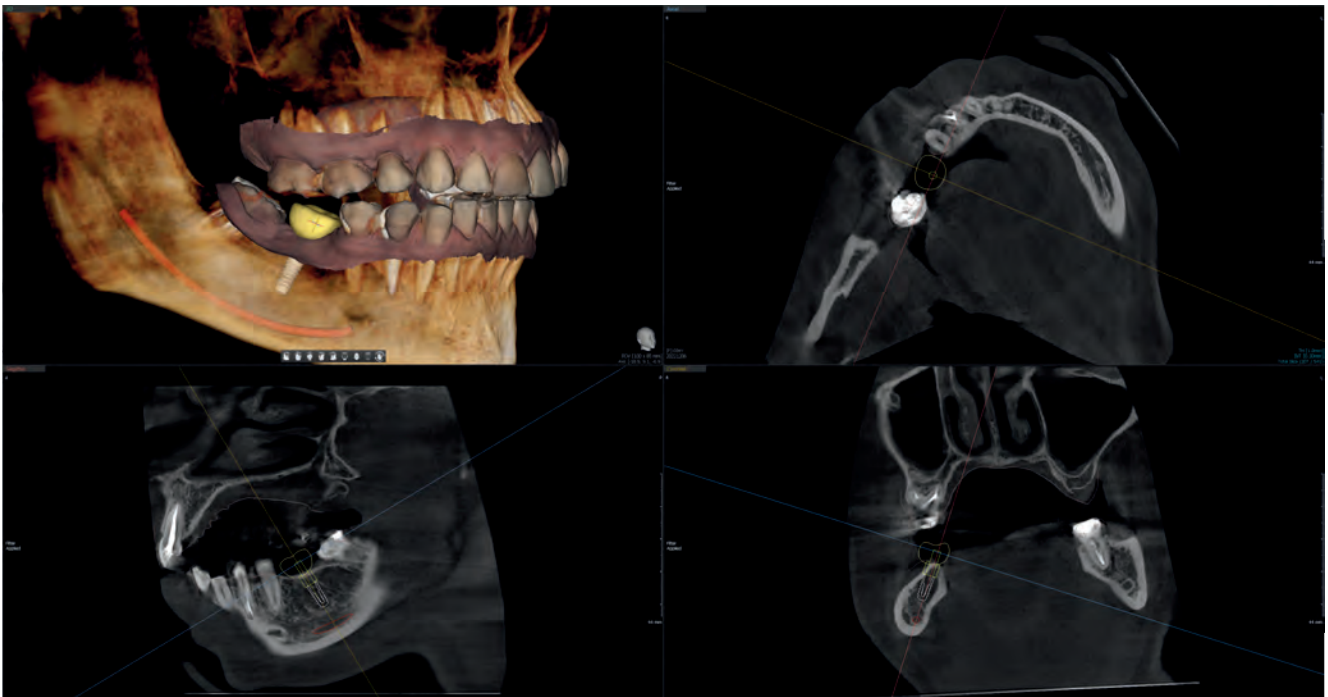
## + ONE SCAN, TWO IMAGES

One scan with the Smart or Smart Plus gives you not just a CT image but also an Auto Pano image. This means patients who require both images do not need to undergo two X-ray scans. Also, CT and Auto Pano images are displayed within one viewer.



## + BE SMART WHEN YOU'RE IMPLANTING

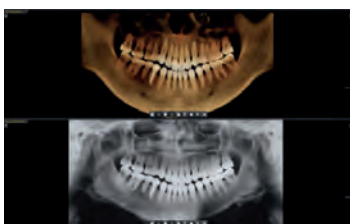
The Smart ART-V technology in Smart units provides users with powerful images that are not affected by metal artifacts, for example in implantology cases. The detailed information from Smart images allows implantologists to minimize the risk of complications such as nerve damage, cavity perforation, and implant malposition. This leads to safer procedures and more favorable outcomes for patients.



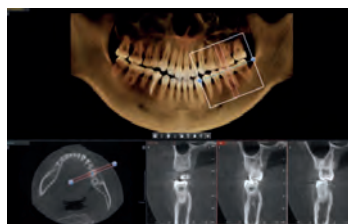
## + 3D AND 2D IN ONE VIEWER

Viewing 2D and 3D images together provides many benefits. There is no need to utilize two different software programs and the one-viewer feature presents a professional look for your patients. This layout helps patients better understand the images, which will eventually result in increasing acceptance rates.

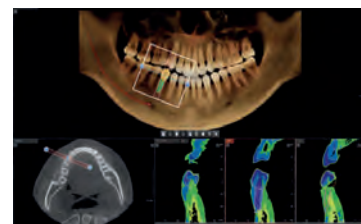
**2D/3D in 1 viewer**



**One-click navigation**



**Implant simulation**

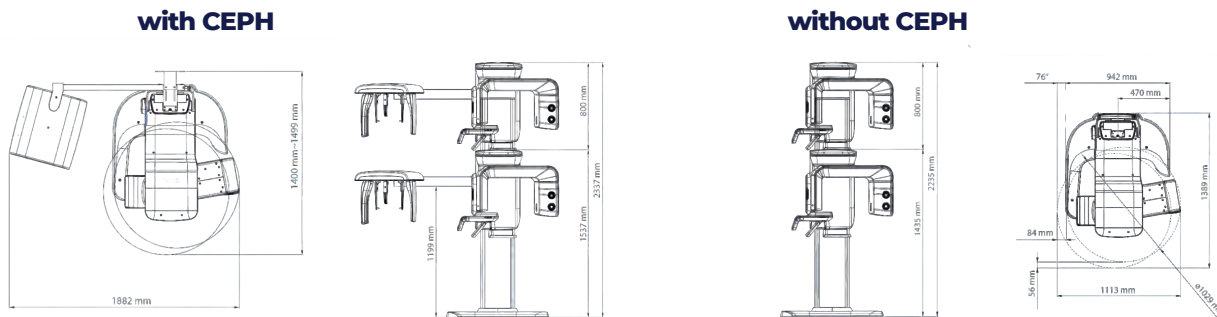


## + SPECIFICATIONS

| Product                | Smart  |
|------------------------|--|
| Function (Device Type) | CT + Pano + Ceph   |
| Voxel Size             | 0.08 mm / 0.2 mm / 0.3 mm                                    |
| Focal Spot Size        | 0.5 mm   |
| FOV Size               | 12x9 cm Anatomical<br>(Multi FOV 5x5 / 10x7 / 10x8.5/8x8 cm) |
| Exposure Time          | Pano: 7/13.6 sec<br>Ceph: 18 sec<br>CBCT: 11-16.4 sec        |
| Recon Time             | Pano: > 2 sec<br>CT: 90 sec                                  |
| Dynamic range          | 14 bit   |
| Tube Voltage / Current | 60 - 99 kVp / 4 -12 mA                                       |

| Product                | Smart Plus   |
|------------------------|--|
| Function (Device Type) | CT(with Auto Pano) + InsightPan + Ceph + Model Scan          |
| Voxel Size             | 0.08 mm / 0.2 mm / 0.3 mm                                    |
| Focal Spot Size        | 0.5 mm   |
| FOV Size               | 12x9 cm Anatomical<br>(Multi FOV 5x5 / 10x7 / 10x8.5/8x8 cm) |
| Exposure Time          | Pano: 7/14.1 sec<br>Ceph: 1.9/3.9sec<br>CBCT: 11-16.4 sec    |
| Recon Time             | Pano: > 2 sec<br>CT: 90 sec                                  |
| Dynamic range          | 14 bit   |
| Tube Voltage / Current | 60 - 99 kVp / 4 -12 mA                                       |

## + DIMENSIONS



# Green X12



 **Up to 5-Year Full Parts Warranty**  
**Up to 10-Year Warranty Sensors & Generator**

 **5 Images in 1 scan**  
Three 4 x 4 cm images, one 12 x 8.5 cm  
and one Auto Pano image at the same time

 **Endo Mode ~ 49.5  $\mu$ m**  
The highest resolution

 **4 - in - 1 function**  
CBCT + Pano + Ceph + Model scan



**ACQUIRE 5 IMAGES  
WITH A SINGLE CAPTURE**

**vatech**

## + SMART FOCUS ~ 1 SCAN, 5 IMAGES

With Green X 12 you will get high-resolution images of multiple treatment areas with a single shot. With 1 scan, you get 5 different high-resolution images. Three 4x4 images, one 12 x 8.5 image and one Auto PANO image. Other advantages are minimal X-ray exposure to the patients and also less work for staff, which means a faster and more efficient workflow.

### Capture Software



### SMART FOCUS



## + MULTI FOV SELECTION

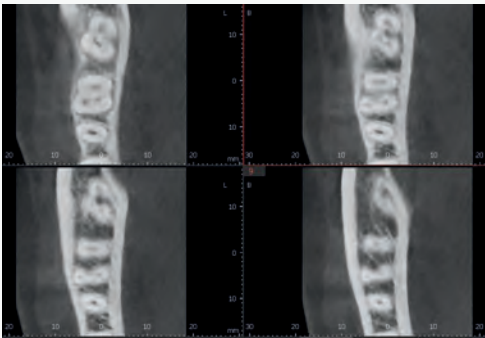
Depending on the purpose of treatment, it is possible to select among 5 types of Multi-FOV from 4x4 to 12x8.5 cm with low dose. You can also get 12 x 14 images with the Double Scan function to get optimal information for diagnosis of the entire dental arch, including the TMJ.

| 4x4                   | 8x5 / 8x8 | 12x8.5    | 12x14*                     |
|-----------------------|-----------|-----------|----------------------------|
|                       |           |           |                            |
| Endo & Single implant | Arch      | Dual Arch | Sinus & TMJ<br>* Stitching |

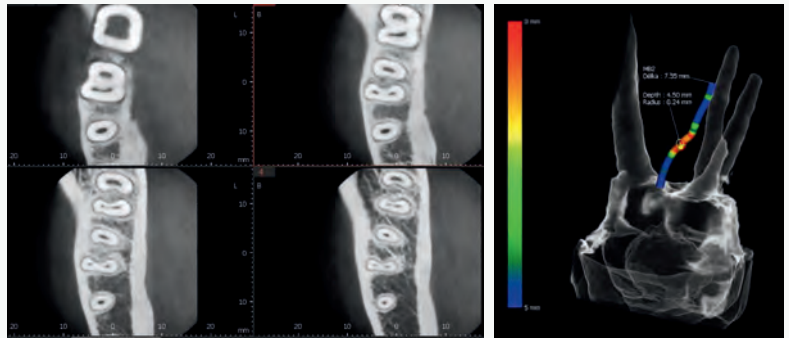
## + ENDO MODE WITH THE HIGHEST RESOLUTION

With its 4 cm x 4 cm volume mode and 49.5-micron voxel size, the Endo mode will optimize the treatment of highly focused regions of interest. It is ideal for endodontic use because the dentist can achieve an extraordinary image in a high-resolution voxel size.

### Dental Mode

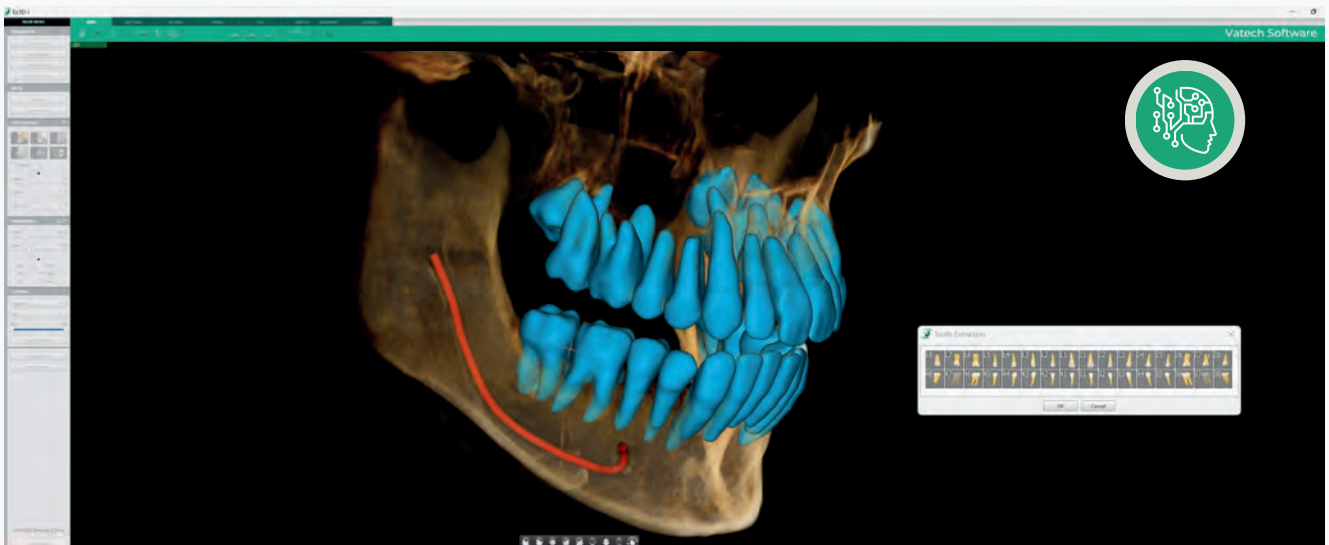


### ENDO mode



## + USE AI TO WORK WITH GREEN X 12

In a rapidly evolving dental environment, the integration of AI technology has brought transformational changes and the Vatech Green X 12 system naturally takes advantage of them as well. From segmentation tasks to offering virtual extraction simulations and Smart Implant placements, AI-driven features have reshaped how dental professionals approach their practice.

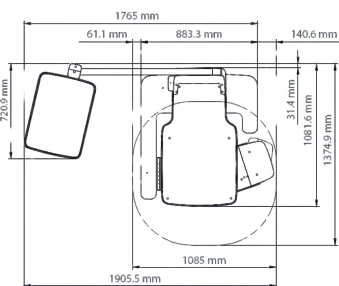


## + SPECIFICATIONS

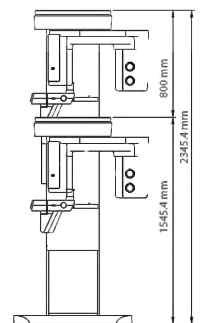
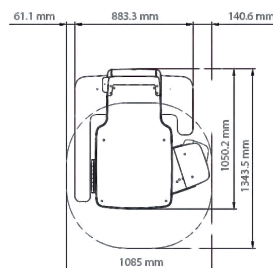
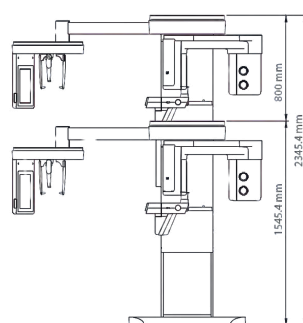
|                                   |   |
|-----------------------------------|---|
| <b>Function (Device Type)</b>     | 4 in 1: Pano + CBCT + Ceph + Model scan   |
| <b>Voxel size</b>                 | 4×4: 0.049 mm<br>8×5, 8×8: 0.12–0.2 mm<br>12×8.5: 0.2–0.3 mm<br>Double Scan 12×14: 0.3 mm<br>Smart Focus 12×8.5: 0.2-0.3 mm<br>Smart Focus 4×4: 0.07 mm |
| <b>Focal Spot Size</b>            | 0.5 mm  |
| <b>FOV size without stitching</b> | 4×4 (endo), 4×4 (Smart Focus), 8×5, 8×8, 12×8.5 cm, 12×8.5 cm (Smart Focus)   |
| <b>FOV Double Scan</b>            | 12x14 cm  |
| <b>Auto Pano</b>                  | Yes   |
| <b>Exposure Time</b>              | Pano: 1.4-13.5 sec<br>Ceph: 1.9-4.9 sec<br>CBCT: 9-16.9 sec   |
| <b>Dynamic range</b>              | 14 bit  |
| <b>Panoramic type</b>             | Pano + Magic pan + Insight Pan with free FOV (Hybrid Sensor for 3D & 2D)  |
| <b>Patient position</b>           | Standing, seated, wheelchair, face to face positioning  |
| <b>Warranty</b>                   | Up to 5 year full parts warranty<br>Up to 10 year Sensor and Generator  |
| <b>Dimension</b>                  | 1085.0(L)×1343.5(W)×2345.4(H) mm  |
| <b>Weight</b>                     | 217,9 kg (without Ceph)<br>242,9 kg (with the Ceph)   |
| <b>SW</b>                         | EzDent-i / Ez3D-i / EzOrtho   |
| <b>Key Features</b>               | Multi-FOV ~ Double Scan ~ Endo ~ Smart Focus / Zoom in ~ Insight Pan ~ Magic Pan ~ Model Scan ~ AutoPan   |

## + DIMENSIONS

**with CEPH**



**without CEPH**



# Green X16



## Up to 10-Years Warranty

on full parts (sensor and generator warranty)



## 49.5 $\mu\text{m}$ Resolution

CMOS Sensor



## 4x4 ~ 16x15 cm

Select your FOV



## CT scan in 2.9 sec

for faster workflow



## PANO ~ CBCT

Ceph & Model Scan

**THE HIGHEST RESOLUTION  
3D CBCT ON THE MARKET**

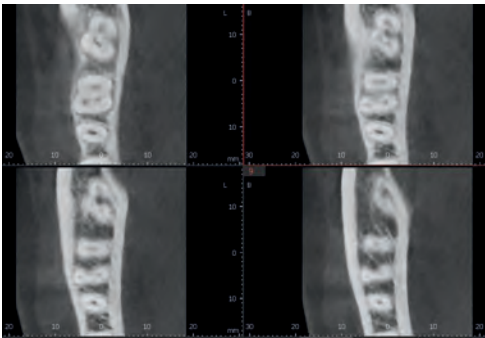
vatech



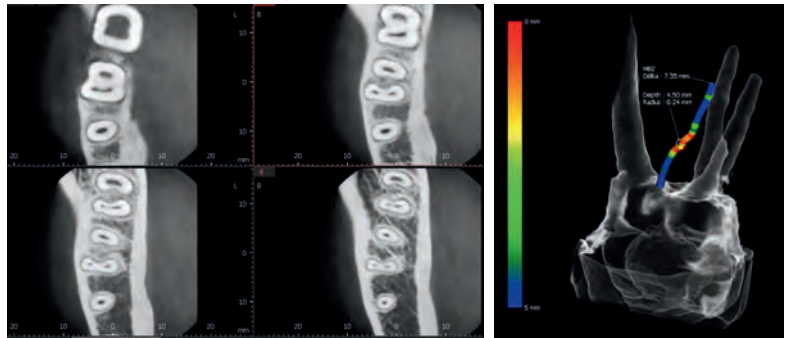
## + ENDO MODE WITH THE HIGHEST RESOLUTION

With its 4 cm x 4 cm volume mode and 49.5 micron voxel size, the Endo mode will optimize the treatment of highly-focused regions of interest. It is ideal for endodontic use because the dentist can achieve an extraordinary image in a high-resolution voxel size.

### Dental Mode



### ENDO mode



## + MULTI FOV SELECTION

Green X 16 offers a range of selectable fields of view. The Multi FOV option allows users to select the optimum FOV mode while minimizing exposure to areas that are not in the region of interest. Select the proper FOV size (from 4x4 to 16x15 cm) based on your diagnostic need.

4x4 / 5x5



Endo &  
Single implant

8x5 / 8x8



Arch

12x9



Dual Arch

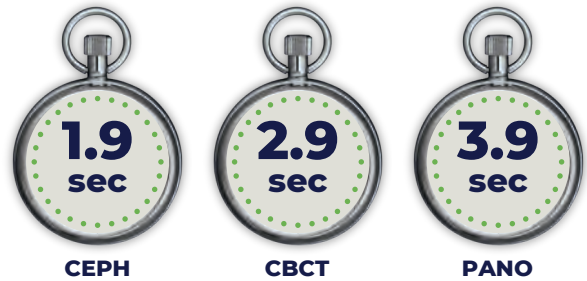
16x9 / 16x15\*



Sinus & TMJ  
\*Stitching

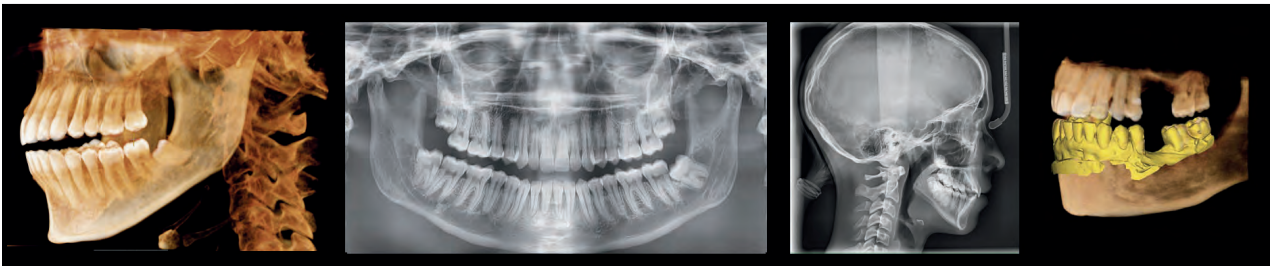
## + GREEN SCAN TIME

Due to its scan time, the Green X 16 minimizes motion artifacts and enables faster workflow. It produces superb diagnostic images, which will be a source of pride for any dental practice. Focusing on the highest quality of patient care, Vatech strives to improve the health and safety of your patients.



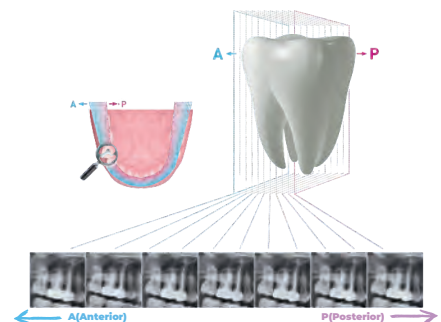
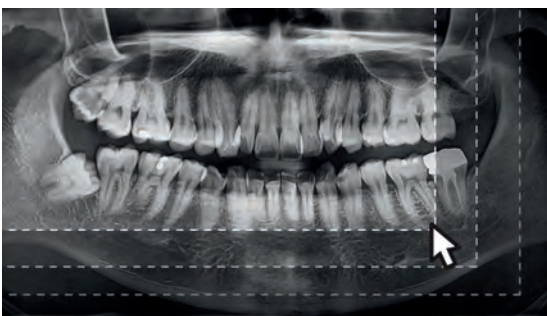
## + 4-IN-1 DIGITAL X-RAY IMAGING SYSTEM

Green X 16 is an advanced 4-in-1 digital X-ray imaging system that incorporates Pano, Ceph (optional), CBCT & Model Scan. With Vatech's extensive experience in the dental imaging field, the Green X provides high-quality images with lower radiation by combining image processing.



## + INSIGHT 2.0 / FREE FOV

The Insight Pan is capable of taking a multilayered panoramic image, called an Insight Pan, which provides a unique in-depth look across a single focal trough. Insight 2.0 has an upgraded free FOV feature so you will be able to capture just the area of interest.

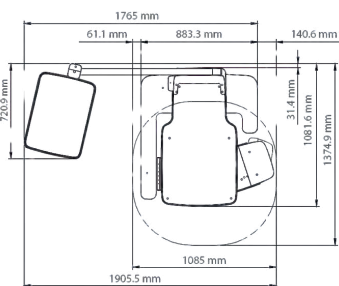


## + SPECIFICATIONS

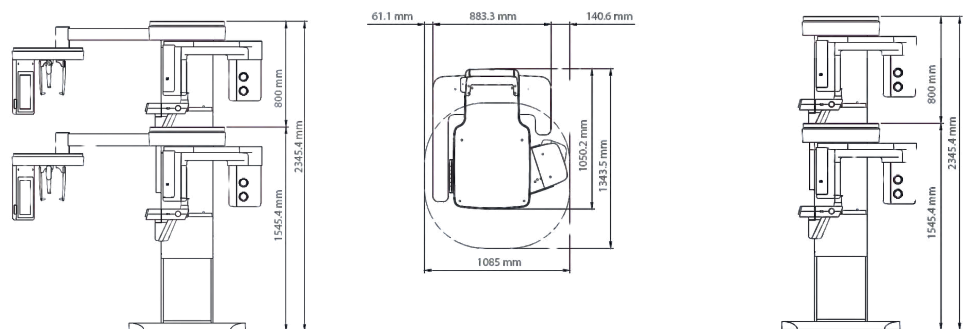
|                                   |  |
|-----------------------------------|--|
| <b>Function (Device Type)</b>     | 4 in 1: Pano + CBCT + Ceph + Model scan  |
| <b>Voxel size</b>                 | 4×4: 0.049 mm<br>5×5: 0.08–0.12 mm<br>8×5, 8×8: 0.12–0.2 mm<br>12×9, 16×9: 0.2–0.3 mm<br>Double Scan 16×15: 0.3 mm |
| <b>Focal Spot Size</b>            | 0.5 mm   |
| <b>FOV size without stitching</b> | 4×4, 5×5, 8×5, 8×8, 12×9, 16×9 cm  |
| <b>FOV Double Scan</b>            | 16×15 cm   |
| <b>Auto Pano</b>                  | No   |
| <b>Exposure Time</b>              | Pano: 4-14.1 sec<br>Ceph: 1.9-4.9 sec<br>CBCT: 2.9 - 18 sec  |
| <b>Dynamic range</b>              | 14 bit   |
| <b>Panoramic type</b>             | Pano + Magic pan + Insight Pan with free FOV<br>(Hybrid Sensor for 3D & 2D)  |
| <b>Patient position</b>           | Standing, seated, wheelchair, face to face positioning   |
| <b>Warranty</b>                   | Up to 10 years of warranty on full parts   |
| <b>Dimension</b>                  | 1085.0(L)×1343.5(W)×2345.4(H) mm   |
| <b>Weight</b>                     | 217,9 kg (without Ceph)<br>242,9 kg (with the Ceph)  |
| <b>SW</b>                         | EzDent-i / Ez3D-i / EzOrtho  |
| <b>Key Features</b>               | Multi-FOV ~ Double Scan ~ Endo ~ Insight Pan ~ Model Scan~ Magic Pan   |

## + DIMENSIONS

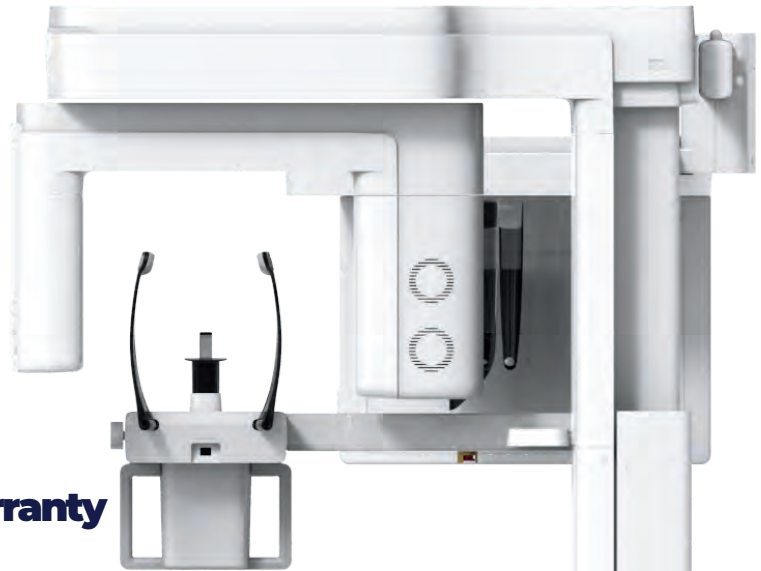
with CEPH



without CEPH



# Green X18



**Up to 10-Years Warranty**  
on full parts



**49.5  $\mu$ m Resolution**  
CMOS Sensor



**4x4 ~ 18x24 cm**  
Select your FOV



**Effective Dose Data**  
up to 70% lower



**PANO ~ CBCT**  
Ceph & Model Scan



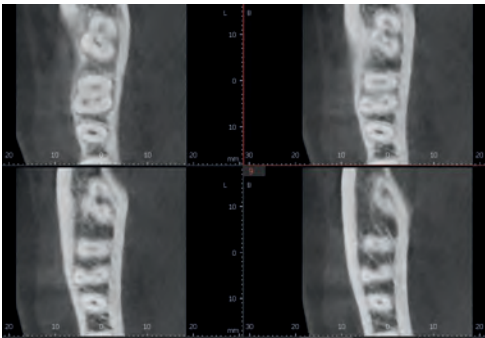
**TOP IMAGE QUALITY  
WITH FOV UP TO 18x24 CM**

**vatech**

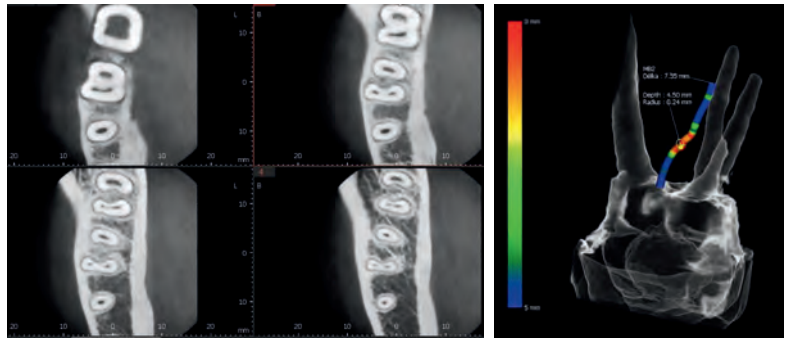
## + ENDO MODE WITH THE HIGHEST RESOLUTION

With its 4 cm x 4 cm volume mode and 49.5 micron voxel size, the Endo mode will optimize the treatment of highly-focused regions of interest. It is ideal for endodontic use because the dentist can achieve an extraordinary image in a high-resolution voxel size.

### Dental Mode



### ENDO mode



## + MULTI FOV SELECTION

Green X 18 offers a range of selectable fields of view. The Multi FOV option allows users to select the optimum FOV mode while minimizing exposure to areas that are not in the region of interest. Select the proper FOV size (from 4x4 to 18x24 cm) based on your diagnostic need.

4x4 / 5x5



Endo &  
Single implant

8x5 / 8x8



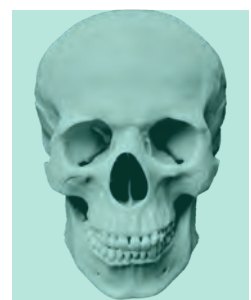
Arch

16x11



Dual Arch

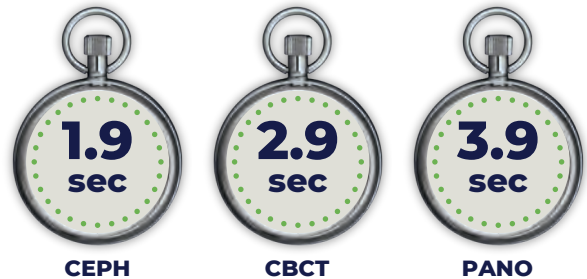
18x15/18x24\*



Sinus & TMJ  
\*Stitching

## + GREEN SCAN TIME

Due to its scan time, the Green X 18 minimizes motion artifacts and enables faster workflow. It produces superb diagnostic images, which will be a source of pride for any dental practice. Focusing on the highest quality of patient care, Vatech strives to improve the health and safety of your patients.



## + 4-IN-1 DIGITAL X-RAY IMAGING SYSTEM

Green X 18 is an advanced 4-in-1 digital X-ray imaging system that incorporates Pano, Ceph (optional), CBCT & Model Scan. With Vatech's extensive experience in the dental imaging field, the Green X provides high-quality images with lower radiation by combining image processing.



## + POWERFUL DIAGNOSTIC VALUE WITH FOV 18X15

The 18x15 images from the Vatech Green X 18 allow the dentist to make a comprehensive diagnosis, including airway & maxillofacial surgery.

This ideal FOV size will prove to be a useful insight in complex orthognathic, implant, and orthodontic surgeries.

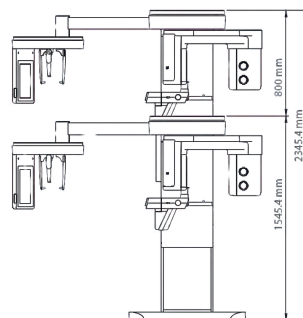
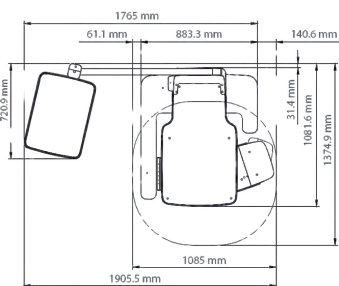


## + SPECIFICATIONS

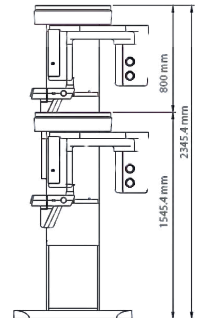
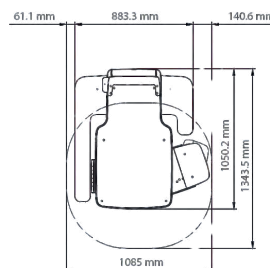
|                                   |  |
|-----------------------------------|--|
| <b>Function (Device Type)</b>     | 4 in 1: Pano + CBCT + Ceph + Model scan  |
| <b>Voxel size</b>                 | 4×4: 0.049 mm<br>5×5: 0.08–0.12 mm<br>8×5, 8×8: 0.12–0.2 mm<br>16×11, 18×15, 0.2–0.3 mm<br>Double Scan 18×24: 0.3 mm |
| <b>Focal Spot Size</b>            | 0.5 mm   |
| <b>FOV size without stitching</b> | 4×4, 5×5, 8×5, 8×8, 16×11, 18×15 cm  |
| <b>FOV Double Scan</b>            | 18×24 cm   |
| <b>Auto Pano</b>                  | No   |
| <b>Exposure Time</b>              | Pano: 3,19–14,1 sec<br>Ceph: 1,9–3,99 sec<br>CBCT: 2.9 - 18 sec  |
| <b>Dynamic range</b>              | 14 bit   |
| <b>Panoramic type</b>             | Pano + Magic pan + Insight Pan with free FOV<br>(Hybrid Sensor for 3D & 2D)  |
| <b>Patient position</b>           | Standing, seated, wheelchair, face to face positioning   |
| <b>Warranty</b>                   | Up to 10 years of warranty on full parts   |
| <b>Dimension</b>                  | 1085.0(L)×1343.5(W)×2345.4(H) mm   |
| <b>Weight</b>                     | 220,9 kg (without Ceph)<br>245,9 kg (with the Ceph)  |
| <b>SW</b>                         | EzDent-i / Ez3D-i / EzOrtho  |
| <b>Key Features</b>               | Multi-FOV ~ Double Scan ~ Endo ~ Insight Pan ~ Magic Pan ~ Model Scan  |

## + DIMENSIONS

with CEPH



without CEPH



# Green X's Comparison



| Product                           | Green X 12  | Green X 16   | Green X 18  |
|-----------------------------------|---|--|---|
| <b>Function (Device Type)</b>     | 4 in 1: Pano + CBCT + Ceph + Model scan   | 4 in 1: Pano + CBCT + Ceph + Model scan  | 4 in 1: Pano + CBCT + Ceph + Model scan   |
| <b>Voxel size</b>                 | 4×4: 0.049 mm<br>8×5, 8×8: 0.12–0.2 mm<br>12×8.5: 0.2–0.3 mm<br>Double Scan 12×14: 0.3 mm<br>Smart Focus 12×8.5: 0.2–0.3 mm<br>Smart Focus 4×4: 0.07 mm | 4×4: 0.049 mm<br>5×5: 0.08–0.12 mm<br>8×5, 8×8: 0.12–0.2 mm<br>12×9, 16×9: 0.2–0.3 mm<br>Double Scan 16×15: 0.3 mm | 4×4: 0.049 mm<br>5×5: 0.08–0.12 mm<br>8×5, 8×8: 0.12–0.2 mm<br>16×11, 18×15: 0.2–0.3 mm<br>Double Scan<br>18×24: 0.3 mm |
| <b>Focal Spot Size</b>            | 0.5 mm  | 0.5 mm   | 0.5 mm  |
| <b>FOV size without stitching</b> | 4×4 (endo), 4×4 (Smart Focus), 8×5, 8×8, 12×8.5 cm, 12×8.5 cm (Smart Focus)   | 4×4, 5×5, 8×5, 8×8, 12×9, 16×9 cm  | 4×4, 5×5, 8×5, 8×8, 16×11, 18×15 cm   |
| <b>FOV Double Scan</b>            | 12x14 cm  | 16x15 cm   | 18x24 cm  |
| <b>Auto Pano</b>                  | Yes   | No   | No  |
| <b>Exposure Time</b>              | Pano: 1.4-13.5 sec<br>Ceph: 1.9-4.9 sec<br>CBCT: 9-16.9 sec   | Pano: 4-14.1 sec<br>Ceph: 1.9-4.9 sec<br>CBCT: 2.9 - 18 sec  | Pano: 3,19-14,1 sec<br>Ceph: 1,9-3,99 sec<br>CBCT: 2.9 - 18 sec   |
| <b>Dynamic range</b>              | 14 bit  | 14 bit   | 14 bit  |
| <b>Panoramic type</b>             | Pano + Magic pan + Insight Pan with free FOV (Hybrid Sensor for 3D & 2D)  | Pano + Magic pan + Insight Pan with free FOV (Hybrid Sensor for 3D & 2D)   | Pano + Magic pan + Insight Pan with free FOV (Hybrid Sensor for 3D & 2D)  |
| <b>Patient position</b>           | Standing, seated, wheelchair, face to face positioning  | Standing, seated, wheelchair, face to face positioning   | Standing, seated, wheelchair, face to face positioning  |
| <b>Warranty</b>                   | Up to 5 year full parts warranty<br>Up to 10 year Sensor and Generator  | Up to 10 Years of warranty on full parts (sensor and generator warranty)   | Up to 10 Years of warranty on full parts (sensor and generator warranty)  |
| <b>Dimension</b>                  | 1085.0(L)×1343.5(W)×2345.4(H) mm  | 1085.0(L)×1343.5(W)×2345.4(H) mm   | 1085.0(L)×1343.5(W)×2345.4(H) mm  |
| <b>Weight</b>                     | 217,9 kg (without Ceph)<br>242,9 kg (with the Ceph)   | 217,9 kg (without Ceph)<br>242,9 kg (with the Ceph)  | 220,9 kg (without Ceph)<br>245,9 kg (with the Ceph)   |
| <b>SW</b>                         | EzDent-i / Ez3D-i / EzOrtho   | EzDent-i / Ez3D-i / EzOrtho  | EzDent-i / Ez3D-i / EzOrtho   |
| <b>Key Features</b>               | Multi-FOV ~ Double Scan ~ Endo ~ Smart Focus / Zoom in ~ Insight Pan ~ Magic Pan ~ Model Scan ~ AutoPan   | Multi-FOV ~ Double Scan ~ Endo ~ Insight Pan ~ Model Scan ~ Magic Pan  | Multi-FOV ~ Double Scan ~ Endo ~ Smart Focus / Zoom in ~ Insight Pan ~ Magic Pan ~ Model Scan ~ AutoPan                 |



# PC Requirements

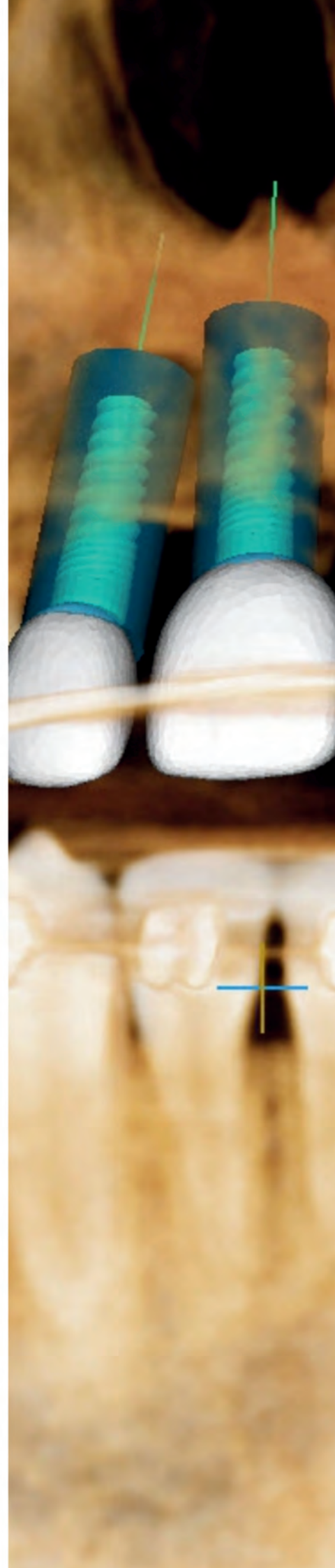


| Suited for (product) | PaX-i Plus, PaX-i Insight, Vatech A9  | Green X 12   | PaX-i 3D Smart, Smart Plus, Green 16, Green X 16, Green X 18   |
|----------------------|---|--|--|
| CPU                  | Intel® Core i3-9100 3.6 4C  | Intel XeonW-2223 3.6 4C  | E5-1607v4 4C 3.1GHz 2133 10MB  |
| RAM                  | 16 GB (2 x 8 GB) DDR4-2666 UDIMM NECC Memory APJ  | 32 GB (4 x 8 GB) DDR4-2666 ECC REG APJ or larger   | 16 GB DDR4 2666 ECC Registered RAM or larger   |
| HDD                  | 1 TB SATA 7200 rpm 3.5 in WKS   | 1 TB SATA 7200 rpm * 2EA   | 1TB SATA   |
| Graphics board       | GEFORCE GTX1050 Ti DUAL D5 4G (PaX-i Plus does not require GC)  | RTX 3050 D6 8GB  | ZOTAC Gaming GTX 1660 6G or greater  |
| Ethernet Interface   | Intel Ethernet I210-T1 PCIe x1 Gb NIC or LS-PCIE-EX210AT  | Broadcom 5761 Gigabit PCIe NIC   | Integrated Intel I218LM PCIe GbE   |
| Serial Port (RS232)  | HP Serial Port Adapter Kit  | HP Serial Port Adapter Kit   | NEXT-SL601 PCI-E   |
| Power Supply         | 500 W internal power module, up to 90% efficiency, active PFC   | 750 W internal power module, up to 90% efficiency, active PFC                                | ≥ 700 Watts (90% efficient)  |
| Slots                | M.2 PCIe x1 2230 (for WLAN)<br>M.2 PCIe x4 2280/2230 Combo (for storage)<br>PCI Express v3.0 x1<br>PCI Express v3.0 x16 (wired as x4)<br>PCI Express v3.0 x16 | 2 ports PCIe 3x4<br>2 ports M.2 PCIe 3x4<br>1 port PCIe x8<br>2 ports PCIe x16<br>1 PCI Slot | 2 PCI Express Gen3 x16 slot<br>1 PCI Express Gen3 x 8 Slot<br>1 PCI Express Gen2 x 4 Slot<br>1 PCI Express Gen2 x 1 Slot<br>1 PCI Slot |
| CD/DVD drive         | DVD-ROM, DVD+/-RW, Blu-Ray  | DVD-ROM, DVD+/-RW, Blu-Ray   | DVD-ROM, DVD+/-RW, Blu-Ray   |
| Monitor              | 19" 1280x1024 screen resolution   | 19" 1280x1024 screen resolution  | 19" 1280x1024 screen resolution  |
| Operating System     | Windows 10 64-Bit OS or Higher  | Windows 10 64-Bit OS or Higher   | Windows 10 64-Bit OS or Higher   |
| Recommended System   | HP ZIG5   | HP Z4  | HP Z4  |

\* If an ethernet card is not installed on your PC, purchase an Ethernet card separately.

In case of any changes, information will be communicated to you in cooperation with the authorized distributors

# Software





# Meet Vatech's **Software**

Vatech provides superb dental imaging software for every dentist. Our software is the ideal tool to quickly and easily obtain the correct perspectives needed for accurate, true-to-measurement diagnosis.

**vatech**

## + QUICK AND EASY DENTAL 3D IMAGING SOFTWARE

Powered by a new 3D VR graphics engine, Ez3D-i is the ideal tool to quickly and easily obtain the correct perspectives needed for accurate, true-to-measurement diagnosis.

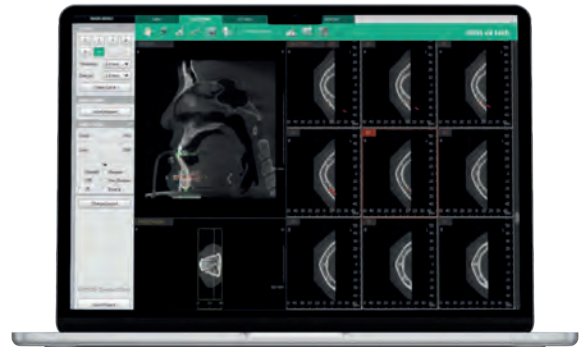


## + 3D PAN NAVIGATION

Easily navigate and obtain a sectional view by utilizing our new and intuitive 3D panoramic navigation mode. You can simply click and drag our viewing window over the 3D panorama to obtain a sectional view of that region.

## + MULTI-CURVE MANAGEMENT

Draw sectional curves from either the MPR View or Sectional View. You can select up to 8 different sectional curves. Intuitive click-and-drag sectional view manipulation.



**CUTTING-EDGE SW  
FOR YOUR DIAGNOSIS**

## + VIRTUAL CONSULTATION TOOL

With more than 200 unique animations, the virtual consultation tool gives you the tools to not only educate patients on treatment plans but also to show how the plan is relevant to their specific case.

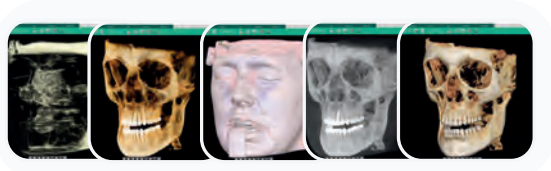
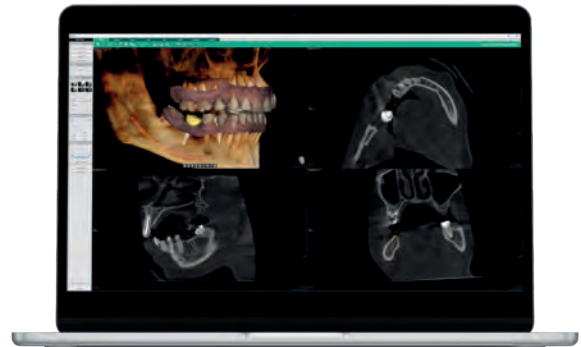


## + IMPLANT SIMULATION

It's available in all viewing modes in Ez3D-i (MPR/Section/3DPan). Colorized bone density viewing modes are also available. There is also an adjustable automatic implant collision detection function between multiple implants and/or nerve canals.

## + MERGE CBCT WITH INTRAORAL SCANS

Automatic and editable merging of the CBCT scan (.dcm) with the digital impression obtained by the optical scanner (.stl,obj,.ply) to achieve high-definition digital diagnosis & treatment planning



## + VARIOUS COLORING MODES AND 2D FILTERS

Switch quickly and easily between multiple VR views

## + **MANAGE YOUR IMAGES, THE EASIEST WAY**

Organize, import, export, and capture your images from different devices quickly and efficiently. Avoid complicated procedures, using EzDent-i is an intuitive Click-And-Drag based interface.



## + **GET THE MOST OUT OF YOUR IMAGES**

Using our revamped Sharpening and Max Sharpening tools, enhance the quality of your images even further than ever before.

## + **VATECH'S VIRTUAL CONSULTATION TOOL**

The virtual consultation tool (VCT) gives you the tools to not only educate patients on treatment plans but also to show how the plan is relevant to their specific case.



**SIMPLY ESSENTIAL  
2D SOFTWARE**

## + FREEDOM OF MOBILITY

EzMobile allows you to access your 2D images just like EzDent-i but frees you from a terminal. You can also easily capture periapical images from a mobile device while storing them securely in EzServer then make quick diagnoses on the move, without the hassle of a mouse or keyboard.



## + DIAGNOSE, SIMULATE

EzMobile puts powerful diagnostic and simulation tools at your fingertips. Access your favorite tools, redesigned for the mobile platform.

## + IMPLANT SIMULATION

Enjoy the quick and easy Implant Simulation provided in EzMobile. Just like in EzDent-i, you can access the wide range of implants from various manufacturers stored on EzServer.



## + CONSULTATION ANY TIME

Get access to the same Consult Contents as EzDent-i for your consultation needs. The Patient Consultation function is accessible from all screens via the [ Consult ] button.

## + ONE CLICK TRACING

EzOrtho provides an automatic tracing feature (Tracing with DAVIS) which performs the most tedious task in the diagnosis process with a click of a button. This AI-aided feature finds 36 landmarks and 7 outlines that are required for 15 unique analysis methods provided in EzOrtho.



## + DIGITALIZE & ANALYZE

EzOrtho covers the orthodontic workflow, from precise orthodontic analysis to effective patient communication. It's an all-in-one solution for your orthodontic treatment.

## + EXACT & EASY ANALYSIS

EzOrtho is a digital analysis tool specially designed for Orthodontics, which enables quick and simple tracing. Save time and boost the efficiency of your workflow with EzOrtho. In the Analysis Chart, users can see the traced X-ray image and analysis results at the same time.



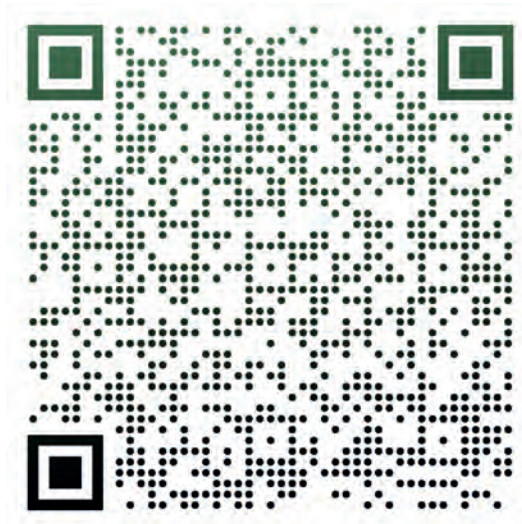
## + 3D PHOTO TOOL

EzOrtho generates a 3D Photo from a patient's frontal and lateral photo images. Talk to a patient in 3D with their own face; EzOrtho enables treatment planning and consultation with a patient's face from various angles.



## 🎥 SOFTWARE VIDEO TUTORIALS

All video content and video tutorials are available on our YouTube channel called @VatechEurope. We update video tutorials when we add new functionality, so please subscribe to our YouTube channel if you wish to be updated when new videos are available.



## + SCHEDULE SOFTWARE PRESENTATION

Vatech recognizes the importance of education and training. We believe that proper education and understanding of your equipment are the key to providing the most reliable patient care.

That's why we host a variety of trainings, workshops, and seminars, and we will be happy to schedule a one-on-one appointment to provide you with the tools to expand your knowledge. You can take full advantage of the Vatech equipment and software that helps your dental practice as well as the patient.

✉ **Please contact us to schedule a presentation at [office@vatecheurope.com](mailto:office@vatecheurope.com)**



## **+ SCHEDULE SHOWROOM VISIT**

As the European subsidiary of Vatech Europe, we provide innovative dental X-ray imaging solutions including customer support to dentists in more than 15 countries in Central and Eastern Europe. We work closely with our network of distributors to ensure fast, up-to-date, and relevant Vatech product supply and service for our customers from Czechia, Slovakia, Poland, Hungary, Bulgaria, Romania, Ukraine to North Macedonia and Greece.

For this purpose, in 2019 we opened a showroom and training center in Prague, Czechia. In the newly renovated and expanded headquarters of Vatech Europe, our current or potential customers can take a look under the hood of the latest Vatech products and experience working with the latest intraoral, 2D, or 3D imaging technology and dental software in one place.



 Please contact us to schedule a visit at [office@vatecheurope.com](mailto:office@vatecheurope.com)



ARE YOU INTERESTED IN VATECH PRODUCTS?  
**Please contact our authorized distributors**



- |  |   |   |  |   |
|--|---|---|--|---|
|  Albania      |  Austria |  Belgium     |  Bosnia    |  Bulgaria    |
|  Croatia      |  Czechia |  Estonia     |  France    |  Germany     |
|  Greece       |  Hungary |  Italy       |  Lithuania |  Netherlands |
|  N. Macedonia |  Poland  |  Romania     |  Serbia    |  Slovakia    |
|  Spain        |  Sweden  |  Switzerland |  Ukraine   |  UK          |

[www.vatecheurope.com](http://www.vatecheurope.com)

**vatech**

**Vatech Europe**

[office@vatecheurope.com](mailto:office@vatecheurope.com)

Evropská 2588/33a, Prague, Czech Republic

[www.vatecheurope.com](http://www.vatecheurope.com)

Always On Your Side